

*Ford* **TRANSIT CONNECT**



Go Further



VISIONARY. INGENIOUS. REMARKABLE.  
EVERY VEHICLE BEARS HIS SIGNATURE.

*Henry Ford*

CONTENTS

Introduction .....	02	Driver assistance technologies.....	14	Colour and trim.....	32
Audio and communication .....	04	Remarkable Technologies.....	22	Options and accessories .....	34
Loadspace .....	06	Base .....	24	Ford Protect .....	36
Load capacity and payload .....	08	Trend .....	26	Specifications .....	38
Engines .....	10	Limited.....	28	Stowage/Next steps .....	52
Cost of ownership .....	12	Sport.....	30		



Model shown is a Transit Connect Van Sport L1 in Chrome Blue metallic body colour (option).



Model shown is a Transit Connect Commercial Kombi L2 M1 in Kapoor Red metallic body colour (option) and 16" 5x2-spoke alloy wheels, painted Sparkle Silver (option). (N/A for ROI)

Scan the QR codes to access additional content.  
View Ford's remarkable history in action.





# Built for the toughest of tasks

Functionality is key to the new Transit Connect. So, you'll find a versatile and easily-accessible loadspace, a choice of wheelbase lengths and a comfortable driving environment, all wrapped in a bold new shape. Designed from the very start as a hard-working commercial vehicle, its advanced engine technology optimises power and fuel efficiency, while meeting the latest Euro Stage 6.2 emissions standard.

*Model shown is a Transit Connect Van Trend L1 in Moondust Silver metallic paint (option) with 16" 5x2-spoke alloy wheels, painted Sparkle Silver (option), dual side load doors (option) and full steel bulkhead with load-through hatch.*

360°





# Stay connected with Ford SYNC 3

*Your office on the move just got better.*

## Ford SYNC 3

New Ford SYNC 3 integrates seamlessly with your compatible smartphone, letting you control everything from phone calls and text messaging, to music and satellite navigation – all via the 6" touchscreen, or by using remarkably simple voice commands. (Option)



### MyFord Dock

Designed to hold your smartphone, MP3 player or navigation device. Stream your music through Transit Connect's speakers via Bluetooth® or by using a USB cable connected to the My Connection Radio. Lidded compartment provides storage for your device and contains a charge-only USB socket. (Option on selected models)



### Wireless charging pad

Ingenious charging pad means you can recharge a compatible mobile device\* without the need for a charging cable. (Option)

Model shown is a Transit Connect Limited series with SYNC 3 (option), wireless charging pad (option), Dual-zone Electronic Automatic Temperature Control (DEATC) (option) and 8-speed automatic transmission (option).

\*Wireless charging enabled device required.

\*\*Live Traffic access is complimentary for the first 2 years following the registration of a new Ford featuring SYNC 3 with navigation; thereafter there is an annual licence fee.





# Big on space, big on choice

## Optimised loadspace.

Choose from two wheelbase lengths and three bodystyles to create a load capacity from 1.2 cu.m to 3.6 cu.m, with a potential payload of up to 903 kg.

- Full-height, full-width glazed or unglazed steel bulkhead (Van)
- Moveable full-height, full-width mesh bulkhead (Double Cab-in-Van)
- Load-through bulkhead can accommodate 3.4-metre long items (L2 Van), or 3.0-metre long items (L1 Van)
- Room for up to four 8'x4' boards (L2 Van)
- Sliding kerb side load door (standard on Van)
- Twin sliding side load doors (option on Van, standard on Double Cab-in-Van)
- Single front passenger seat (Van)
- Two first row seats and three second row seats (Double Cab-in-Van)

### Cargo or passengers? You don't have to choose

A choice of seating configurations, for two to seven people, offers a high level of flexibility between loadspace and passenger accommodation.



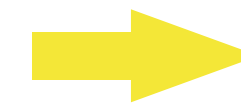
**3.0 m/3.4 m**

#### Load length with load-through bulkhead

Carry items up to 3.0 metres long in the L1 Van with the ingenious load-through bulkhead. L2 models can hold 3.4-metre long items. (Option)

**250,000  
door shuts**

We opened and closed the doors and bonnet over 250,000 times in real-world conditions to help ensure they will never let you down.



Loadspace 6-7

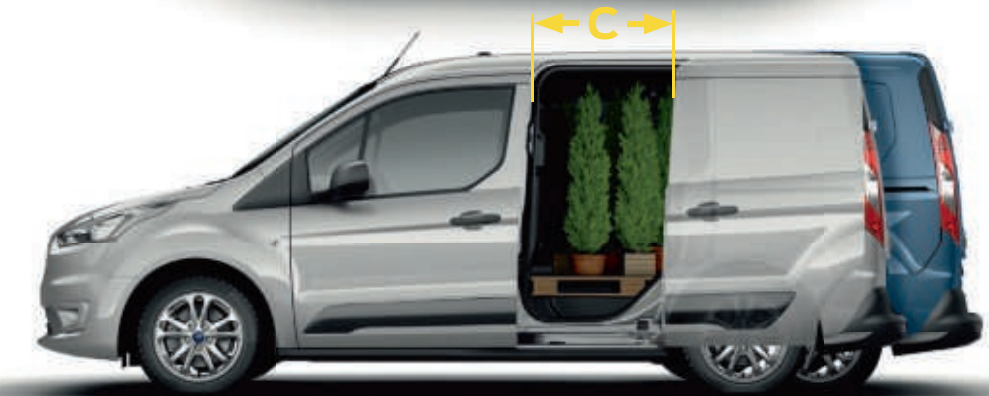
#### Commercial Kombi rear seats

Folding rear seats offer increased versatility for Transit Connect Kombi. (L2 model shown) (N/A for ROI)

#### Easy loadspace access

Access to the flexible loadspace is easy, thanks to wide-opening doors and a low loading height.

**A: 1,249 mm**  
**B: 1,269 mm**  
**C: 433 mm (L1)/660 mm (L2)**



L1 4,425 mm

L2 4,825 mm

H11,830 mm (L1) / 1,828 mm (L2)



Van load capacity and payload

2.9  
cu.m



Van Short wheelbase (L1)

Max. gross payload up to 903 kg  
Gross vehicle mass from 2,155 kg to 2,405 kg



Europallet x1  
2 seats

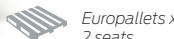


3.6  
cu.m

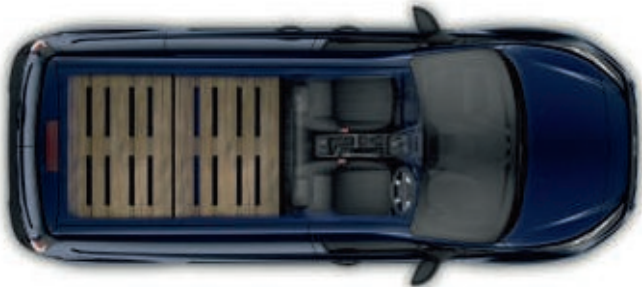


Van Long wheelbase (L2)

Max. gross payload up to 861 kg  
Gross vehicle mass from 2,170 kg to 2,405 kg



Europallets x2  
2 seats



Double Cab-in-Van load capacity and payload

1.2  
cu.m



Double Cab-in-Van Short wheelbase (L1)

Max. gross payload up to 778 kg  
Gross vehicle mass from 2,255 kg to 2,380 kg



Europallet x1  
5 seats

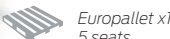


1.6  
cu.m



Double Cab-in-Van Long wheelbase (L2)

Max. gross payload up to 742 kg  
Gross vehicle mass from 2,385 kg to 2,405 kg



Europallet x1  
5 seats



**8'x4' bulkhead**  
L2 Van models can carry up to four 8'x4' sheets of material against a specially-designed steel bulkhead. (Standard on Van)



**Flexible passenger's seat**  
The centre seat folds flat and has a lift-up cushion and underseat storage. The outer seat base folds cinema-style so tall items may be carried. (Option on Van)



**Movable mesh bulkhead**  
Full mesh bulkhead separates loadspace and passenger space, and offers a choice of configurations to suit your changing needs. (Standard on Double Cab-in-Van)



# Choose the engine that's right for you

## ***Petrol or diesel? We've made both options equally tempting.***

New Transit Connect brings bold design and fuel-efficient engines with all-new 1.5-litre Ford EcoBlue diesels, and a 1.0-litre Ford EcoBoost petrol with cylinder deactivation. Combining power, durability and efficiency, it's the ideal partner for your business. What's more, all versions comfortably meet the latest Euro Stage 6.2 emissions regulations, with CO<sub>2</sub> emissions from just 118 g/km†.

For customers who require a petrol option, Transit Connect offers an advanced new version of the multi-awardwinning 1.0-litre Ford EcoBoost engine, which incorporates major changes to the cylinder head, fuel injection and emission-control systems to provide further improvements in fuel efficiency. This includes a cylinder deactivation system which enables the engine to run on two cylinders at low loads, to reduce pumping losses and improve economy.

### **1.0L Ford EcoBoost petrol**

With turbocharging, direct petrol injection and variable valve timing, our award-winning Ford EcoBoost engine delivers the same performance as a larger Ford engine, but with better fuel economy and lower emissions.

### **1.5L Ford EcoBlue diesel**

New Transit Connect is available with a choice of advanced, high-performance Ford EcoBlue diesel engines. All versions combine plenty of pulling power for shifting heavy loads, with low running costs.

170 Nm  
**100 PS** 136 g/km\*

## ***Efficient***

### **1.0L Ford EcoBoost petrol engine**

Our latest multiple award-winning petrol engine delivers an impressive blend of efficiency and performance. Compact, lightweight and refined, it is ideally suited to shorter journeys and city driving.

240 Nm  
**100 PS** 123 g/km\*

## ***Balanced***

### **1.5L Ford EcoBlue diesel engine**

The new Ford EcoBlue 100 PS (74 kW) diesel engine strikes a great performance balance. It delivers the flexible power needed for long distance driving, coupled with low emissions and excellent fuel consumption.

270 Nm  
**120 PS** 135-130 g/km\*

## ***Powerful***

### **1.5L Ford EcoBlue diesel engine**

The new Ford EcoBlue 120 PS (88 kW) diesel engine develops 270 Nm of torque. This makes it the ideal choice for carrying heavy loads and towing, while delivering fuel efficiency from as low as 4.5 L/100 km\* combined.

*\*Calculated Drive Cycle test figures.*

## ***Powered by*** FORD EcoBoost



Sub 1-litre

Ford 1.0 litre EcoBoost

**Winner at the International Engine of the Year Awards for six years running.**

†Calculated Drive Cycle test figures for Transit Connect Base with 75 PS Ford EcoBlue diesel engine.



## **Greater performance, fewer emissions.**

New Transit Connect's Ford EcoBlue diesel engines comply with stringent Euro Stage 6.2 emissions standards. A Selective Catalytic Reduction (SCR) system uses AdBlue®, a urea/water-based fluid to convert NOx emissions in the exhaust gas into nitrogen and water, while the diesel particulate filter is designed to capture 99% of emitted solid particulates from the vehicle's exhaust.





# Cost of ownership

*Exemplary performance that is surprisingly cost-effective.*

Quality and durability are built into new Transit Connect at every step. So, after many years of service, it will feel as good – and drive as beautifully – as it did the day you first took delivery.

**Key cost-saving technologies\***

- Choice of advanced, award-winning Ford EcoBoost petrol or Ford EcoBlue diesel engines for exceptional fuel economy and low CO<sub>2</sub> emissions
- Auto Start-Stop (standard)
- Shift Indicator (standard)
- Speed Limiter (option)
- Acceleration Control (option on Van with manual transmission)
- 12-year perforation warranty provides reassurance against perforation of the bodywork from the inside of the panel

*\*Some technologies shown are available on selected models only. Please refer to the specification section for more details.*



**Auto Start-Stop**

When you stop at traffic lights or your vehicle is idling in a queue, Auto Start-Stop can automatically switch off the engine (while still supplying power to essentials like the headlights, air-conditioning, radio and the Ford SYNC system). When you're ready to move, just depress the clutch and select first gear as usual, or press the accelerator on an automatic, and the system restarts. Auto Start-Stop is particularly effective in city streets, where it can potentially help to reduce fuel consumption and exhaust emissions. (Standard)



**Acceleration Control**

A unique engine calibration for diesel models with manual transmission, designed to limit acceleration and help reduce fuel consumption when the vehicle is lightly laden. (Option)

*Model shown is Trend Commercial Kombi L2 M1 in Chrome Blue metallic body colour (option).*



## Ford Easy Fuel capless refuelling system

No dirty fuel caps to touch. Plus, Ford Easy Fuel with its unique safeguard ensures nobody accidentally fills up with the wrong fuel. (Standard)

## AdBlue® tank

New Transit Connect's Ford EcoBlue diesel engines are fitted with a selective catalytic reduction system to help reduce exhaust emission levels by injecting diesel exhaust fluid (AdBlue®) into the exhaust system. Ford EcoBlue diesel models have an additional 17-litre AdBlue® tank, with a facia-mounted warning light indicates when the tank needs to be refilled. (Standard on Ford EcoBlue diesel models)





# Driver assistance technologies

## *Designed to ease your workload on the road.*

Combining information from camera and radar technology, new Transit Connect can help in various driving situations. From Intelligent Speed Assist that helps you keep within the speed limit, to Driver Alert that warns you when to take a break, Transit Connect is always ready to lend a hand.

### Driver Alert<sup>02)</sup>

Designed to warn you if the system detects driving behaviour that indicates a drop in alertness levels. Initially, a warning icon is displayed in the instrument cluster, followed by an audible chime if driving alertness further declines. (Option as part of a pack)



### Cruise control with Adjustable Speed Limiter<sup>2)</sup>

Set your desired speed and the system will maintain the pace until it's deactivated via a button on the steering wheel, or by pressing the clutch or brake pedal. **Adjustable Speed Limiter<sup>2)</sup>** is particularly helpful in towns and cities. It lets you set your chosen maximum speed and the vehicle then stays within that limit so you can keep your eyes on the road. When you need to go faster, just press the accelerator firmly to override the system. (Standard on Sport and Limited, option for other series)



### Distance Indication

An instrument cluster display continuously indicates the distance to the vehicle in front. The system illuminates a system of coloured icons depending on the proximity settings you've chosen. Distance Alert can notify you with a red warning symbol if you get too close to the vehicle ahead. (Option, part of Pre-Collision Assist)



### Intelligent Speed Assist<sup>02)</sup> with Traffic Sign Recognition<sup>0</sup>

Detects speed limits, including variable limits, and no-overtaking signs via the forward-facing camera and shows them in the cluster display. Intelligent Speed Assist uses the information to help you keep within the prevailing speed limit<sup>01)</sup>. (Option)

<sup>0)</sup>Uses sensors.

<sup>01)</sup>Speed limit may vary according to road and vehicle size. Driver is responsible for adhering to the speed limit at all times.

<sup>2)</sup>Driver assistance feature.





## Parking made simple

When you need to parallel park, or reverse into a perpendicular space, trust Active Park Assist to help. Simply push a button and the sensors of this innovative system locate a suitable space as you drive past. Then it automatically steers you in, while you operate the accelerator, brake and gears, following the on-screen and audible prompts. It can even help you pull out of a parallel space too. (Option)

# Smart parking

**Active Park Assist helps you find a space.**

**And get in. and get out.**

Active Park Assist will park your Transit Connect for you. The system can locate a suitable parking space and automatically steer you into a parallel or perpendicular space. It can also manoeuvre you out of parallel spaces too. All you need to do is operate the accelerator, brake and gears. (Option)



### Let Transit Connect park itself

Once activated, Active Park Assist can help you find a suitable parking space and will automatically steer you in – and out – as required. (Option)

<sup>2)</sup>Driver assistance feature.



### Parking distance sensors, front and rear<sup>2)</sup>

No need to pass by those more challenging parking spaces. An audible warning helps you judge the distance between your vehicle and obstacles at the front and rear, for easier parking and manoeuvring. (Option) (Rear parking sensors standard on Sport and Limited)





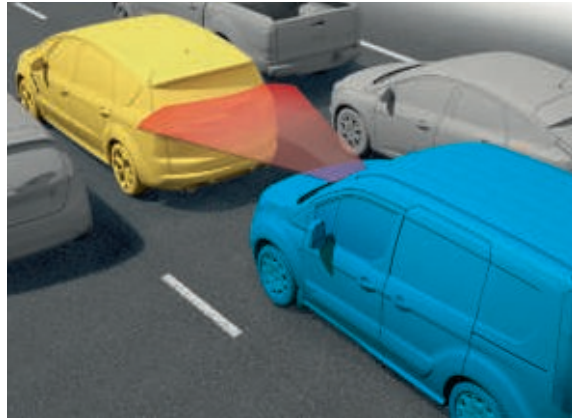
# Anticipate

## ***Pre-Collision Assist<sup>†2)</sup> with Active Braking, Pedestrian Detection, Distance Indication and Distance Alert.***

The new Transit Connect looks out for you and those around you.

Pre-Collision Assist detects vehicles and pedestrians in the road ahead, or who could cross the vehicle's path, and warns you of their presence.

If a pedestrian steps off the pavement, or a vehicle or cyclist slows down or stops, the system is designed to calculate whether you are taking sufficient action to slow down in time to avoid an accident. If you fail to respond, the system automatically applies the brakes. This technology is designed to help reduce the severity of accidents, or help avoid them altogether, and functions at speeds of up to 80 km/h (50 mph). (Option)



### **Active Braking<sup>0)</sup>**

Uses sensors to monitor the road ahead. When it detects a possible collision at speeds of up to 80 km/h (50 mph), it sends you a warning message on the instrument panel. If you don't react, the system can automatically apply the brakes to help you avoid or reduce the severity of a frontal collision. (Option)



### **Lane-Keeping System (Lane-Keeping Alert and Lane-Keeping Aid)<sup>02)</sup>**

Lane-Keeping System uses a forward-looking camera to detect if you're unintentionally drifting out of lane. Lane-Keeping Aid can provide steering torque assistance to help guide you back into the correct lane. Lane-Keeping Alert then warns you by vibrating the steering wheel and displaying a visual warning if you're slow to react or don't respond. The technology is designed for multi-lane roads, such as motorways, and will automatically deactivate at speeds below 65 km/h (43 mph) or can be turned off manually. (Option)

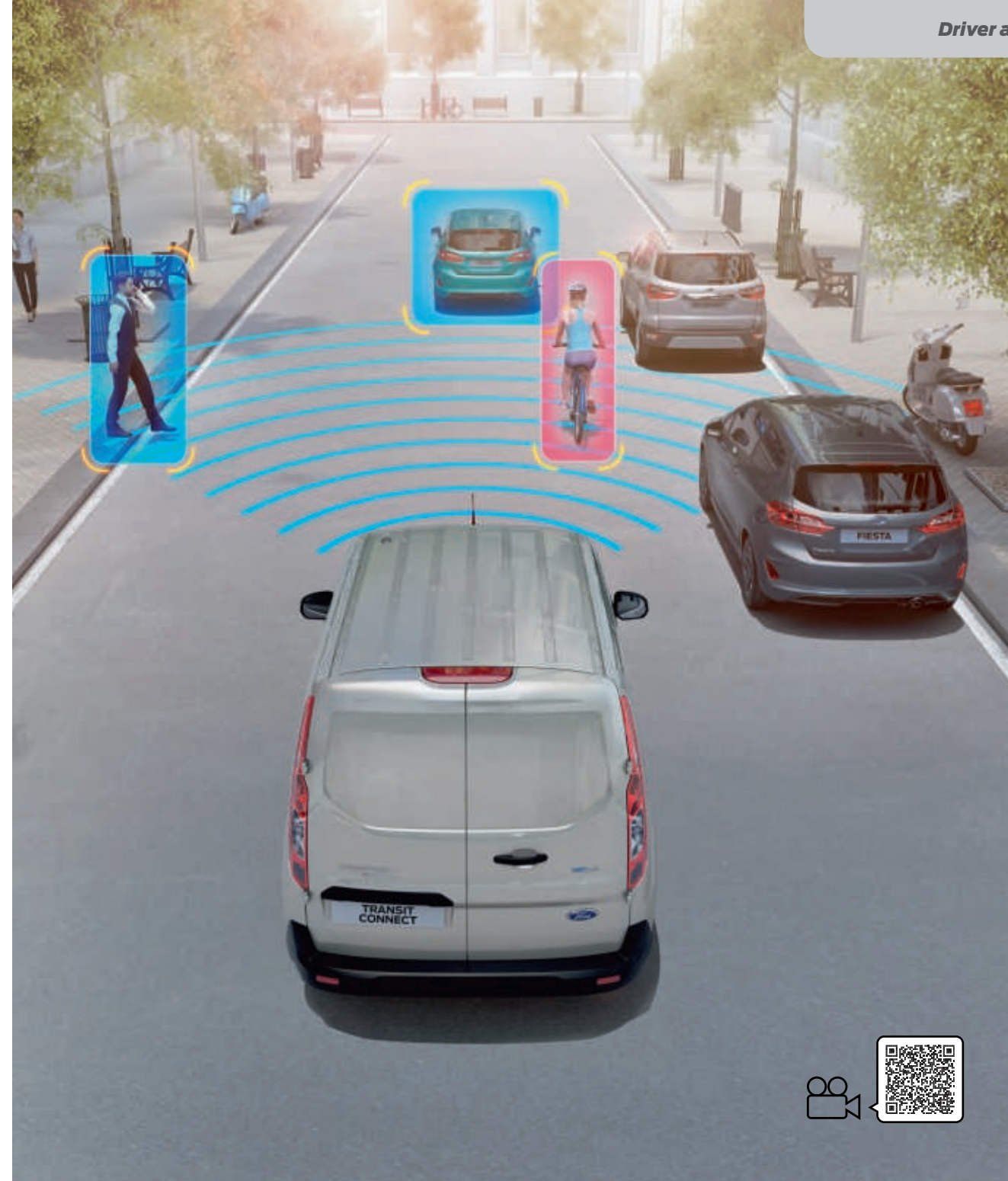


### **Ford Blind Spot Information System<sup>0††</sup>**

As another vehicle – a car, van or lorry – enters your blind spot, it is designed to alert you with a discreet warning light built into the driver's and passenger's door mirrors. (Option on Trend, Sport and Limited)

### **Pre-Collision Assist<sup>†2)</sup> with Pedestrian Detection**

Monitors your proximity to other vehicles and pedestrians, and can alert you to a potential collision. (Option, and included with Adaptive Cruise Control)



## **Side Wind Stabilisation<sup>01)</sup>**

Helps you to stay in lane in strong, gusty conditions by using the ESC system to sense when the vehicle is being affected by crosswinds. (Option)



<sup>0)</sup>Uses sensors.  
<sup>1)</sup>Safety feature. <sup>2)</sup>Driver assistance feature.  
<sup>††</sup>Designed to operate at speeds above 10 km/h.





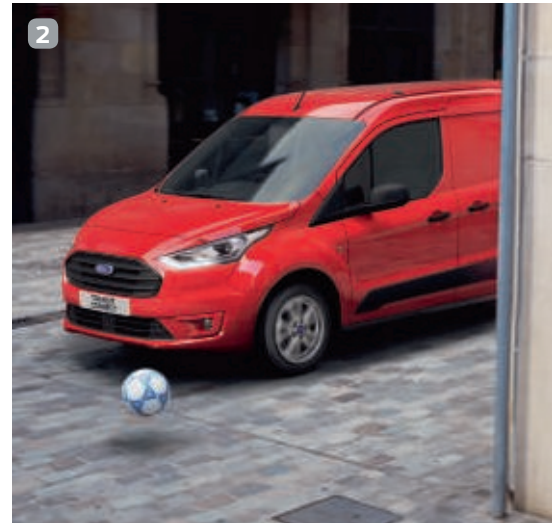
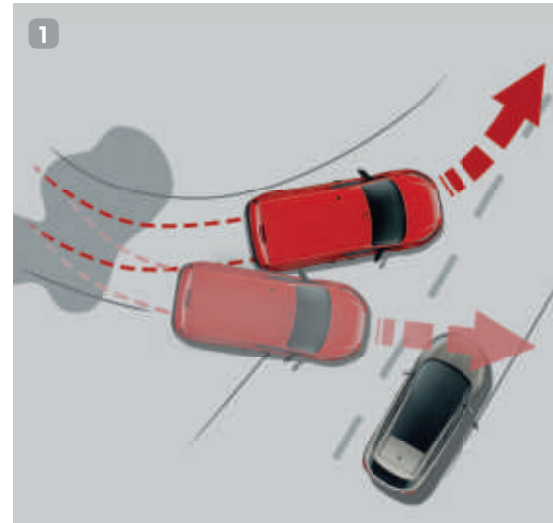
**Trailer Sway Control<sup>®1)</sup>**  
When it detects trailer sway, the system is designed to reduce engine torque and apply the brakes to the appropriate wheel(s) to help maintain control. (Standard, but activated with optional Ford trailer tow attachment)

# Be confident

*All-round protection for peace of mind.*

- 1. Electronic Stability Control (ESC)<sup>®1)</sup>**  
ESC<sup>1)</sup> is designed to help you maintain control in extreme driving conditions. It senses when you are deviating from your chosen line and aims to keep you on track by automatically regulating braking and engine output. (Standard)
- 2. Emergency Brake Assist<sup>®1)</sup>**  
Designed to recognise an emergency braking situation and increases the pressure within the braking system to provide optimum stopping power. (Standard)
- 3. Load Adaptive Control<sup>®1)</sup>**  
Designed to adjust the responses of the ESC<sup>1)</sup> system to compensate when the vehicle is unladen, partially- or fully-laden. (Standard)
- 4. Occupant safety**  
Driver and passenger<sup>®</sup> front airbags with seat-mounted side, head and thorax airbags and side curtain airbags<sup>1)</sup>. (Driver's airbag standard, all other airbags optional)

<sup>®1)</sup>Uses sensors.  
<sup>1)</sup>Safety feature  
**<sup>®</sup>Note: A rear-facing child seat should never be placed in the front passenger seat when the Ford vehicle is equipped with an operational front passenger's airbag.**





# Features to make your life easier



## 1. FordPass Connect modem

FordPass Connect and the FordPass App deliver a suite of connected services in your van and via your smartphone. The new FordPass Connect modem\* makes your journeys easier. Live Traffic\*\* delivers up-to-date traffic information to your SYNC 3 Navigation system. The on-board Wi-Fi allows you and your passengers to connect effortlessly to the internet with up to ten devices\*\*\*. (Option)

Download the FordPass App so that you can control a host of new features from your smartphone. Remotely lock and unlock your van, monitor your fuel level, tyre pressures and find your way back to your parked van on a map.

## 2. Ford Power starter button

Start the engine at the press of a button. Just keep the key fob with you in your pocket or bag. (Standard on Sport and Limited)

## 3. 230 V power socket

A handy 150 Watt 230 V power socket, located between the driver's and passenger seats, can be used to charge tools, laptops or other electrical equipment without the need for special adaptors. (Option, not available on DCiV)

## 4. Automatic transmission

The 100 PS and 120 PS Ford EcoBlue diesel engines are available with a new 8-speed automatic transmission, making Transit Connect even easier and more relaxing to drive. (Option, diesel models only)

## 5. Xenon headlights with static cornering lights and LED daytime running lights

Transit Connect's new xenon headlights offer enhanced light quality over halogen bulbs, while using less energy. Static cornering lights, mounted in each headlight, illuminate corners during turns. Whenever outside light levels dictate, automatic headlights switch on to help keep the road ahead well lit. (Option on Trend, Sport and Limited, not available on Base)

\*FordPass Connect is an optional extra. The on-board modem will be connected at the time of vehicle delivery. You may choose to opt in/opt out of certain data sharing.

\*\*Live Traffic access is complimentary for the first 2 years following the registration of a new Ford featuring SYNC 3 with navigation; thereafter a licence fee is payable.

\*\*\*Wi-Fi hotspot (up to 4G LTE) includes complimentary wireless data trial that begins at time of activation and expires at the end of 3 months or when 3GB of data is used, whichever comes first.

\*To take advantage of the built-in Wi-Fi hotspot capability, a 2018 Ford vehicle must come with the appropriate hardware, and a wireless service plan is required. The on-board modem will be connected at the time of vehicle delivery. Data coverage and service is not available everywhere and terms of your wireless plan, including applicable message and data rates, may apply. You may choose to opt in/opt out of certain data sharing. Please see for more details. The technology will be made available in selected markets in 2018, with the remaining markets following through 2019.





# Base

## Exterior features

- 16" steel wheels painted Shadow Silver
- Kerbside load door
- Ford Easy Fuel capless refuelling system
- Remote central locking



## Interior features

- Radio with MP3 capability, DAB, Bluetooth® and USB connectivity, steering wheel remote audio controls and two speakers
- Electrically-operated front windows with one-shot down on driver's side
- Rake and reach adjustable steering wheel
- Trip computer
- Single passenger seat
- 12-volt AUX power point
- Dual cup holders
- Instrument panel stowage box
- DIN-compliant cargo tie-down hooks
- DIN-compliant full width steel bulkhead
- Overhead stowage

## Bodystyles

- Van
- Double Cab-in-Van

## Engines

- 1.5 Ford EcoBlue diesel 75 PS (55 kW) – Van/DCiV
- 1.5 Ford EcoBlue diesel 100 PS (74 kW) – Van/DCiV

*Model shown is a Ford Transit Connect Base in Magnetic metallic body colour (option).*

**Note** The Bluetooth® word mark and logos are owned by the Bluetooth SIG, Inc. and any use of such marks by Ford Motor Company Limited and its associated companies is under licence. Other trademarks and trade names are those of their respective owners.





# Trend

## Exterior features in addition to Base

- 16" steel wheels with full wheel covers
- Body colour front bumper
- Body colour rear bumper end caps
- Front fog lights
- Electrically-operated and heated door mirrors
- Quickclear heated windscreen and washer jets

## Interior features in addition to Base

- DAB radio, 4.2" TFT display radio including message centre, four speakers, AUX and MP3 capability, Bluetooth® and Voice Control and audible text messaging, USB and Privacy mode
- Front interior light with two map-reading lights



Series overview Trend 26-27

## Bodystyles

- Van
- Double Cab-in-Van

## Engines

- 1.0 Ford EcoBoost petrol 100 PS (74 kW) – Van
- 1.5 Ford EcoBlue diesel 75 PS (55 kW) – Van/DCiV
- 1.5 Ford EcoBlue diesel 100 PS (74 kW) – Van/DCiV
- 1.5 Ford EcoBlue diesel 120 PS (88 kW) – Van/DCiV



Front fog lights  
(Standard)



Quickclear heated windscreen  
(Standard)

**Note** The Bluetooth® word mark and logos are owned by the Bluetooth SIG, Inc. and any use of such marks by Ford Motor Company Limited and its associated companies is under licence. Other trademarks and trade names are those of their respective owners.

Model shown is a Ford Transit Connect Trend in Kapoor Red metallic body colour (option).



# Limited

## Exterior features in addition to Trend

- 16" 5x2-spoke alloy wheels, painted Sparkle Silver
- Body colour bodyside mouldings, door handles and door mirrors
- Automatic headlights and rain-sensing wipers
- Rear parking distance sensors
- Static cornering lights
- Chrome strip in the upper front grille
- Rear parking distance sensors

## Interior features in addition to Trend

- Manual air conditioning
- Cruise control with Adjustable Speed Limiter
- Heated driver's seat
- Ford Power starter button
- Door handles with chrome finish
- 4-spoke leather-trimmed multifunction steering wheel



Series overview Limited 28-29

## Bodystyle

- Van

## Engines

- 1.5 Ford EcoBlue diesel 120 PS (88 kW)  
– Van



Leather-trimmed multifunction steering wheel  
(Standard)



16" 5x2-spoke alloy wheel, painted Sparkle Silver, includes locking wheel nuts  
(Standard)



# Sport

## Exterior features in addition to Trend

- 16"5-spoke alloy wheels, painted Dark Stainless with locking wheel nuts
- Body colour rear bumper, bodyside mouldings, door handles and door mirrors
- Full front and rear body styling kits
- Rear bumper moulding
- Sport stripe kit front, rear and sides
- Rear parking distance sensors
- Automatic headlights and rain-sensing wipers
- Front fog lights with static cornering lights
- Aluminium roof rails

## Interior features in addition to Trend

- Radio, 4.2" screen, Bluetooth® and Voice Control
- Dual-zone Electronic Automatic Temperature Control (DEATC) air conditioning
- Door handles with chrome finish
- 4-spoke leather-trimmed steering wheel

Model shown is a Ford Transit Connect Sport in Chrome Blue metallic body colour (option).



### Bodystyle

- Van

### Engine

- 1.5 Ford EcoBlue diesel 120 PS (88 kW)  
– Van



16" 5-spoke alloy wheel, painted Dark Stainless, includes locking wheel nuts (Standard)



Partial leather seat trim (Standard)

**Note** MotorThe Bluetooth® word mark and logos are owned by the Bluetooth SIG, Inc. and any use of such marks by Ford Motor Company Limited and its associated companies is under licence. Other trademarks and trade names are those of their respective owners.





# Colour and trim

*Choose the colour and trim that best reflects your business brand.*

**1. Base**

Insert: Racer in Dark Palazzo Grey  
Bolster: City Fabric in Ebony

**2. Base**

Insert: Crosshatch in Dark Palazzo Grey  
Bolster: Salerno Vinyl in Ebony

**3. Trend**

Insert: Capitol in Ebony  
Bolster: City Fabric in Ebony

**4. Limited**

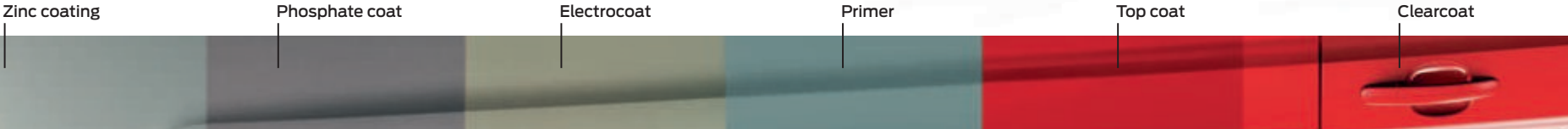
Insert: Ligne in Dark Palazzo Grey  
Bolster: Marl/City Fabric in Ebony

**5. Sport**

Insert: Dynamo in Ebony  
Bolster: Salerno in Ebony

**12-year perforation warranty**

The Transit Connect owes its durable exterior to a thorough multi-stage painting process. From the wax-injected steel body sections to the hard-wearing top coat Transit Connect will retain its good looks for many years to come.



1



2



3



4



5



**Frozen White**  
Solid body colour



**Blazer Blue**  
Solid body colour



**Race Red**  
Solid body colour



**Kapoor Red**  
Metallic body colour\*



**Shadow Black**  
Mica body colour\*



**Moondust Silver**  
Metallic body colour\*



**Chrome Blue**  
Metallic body colour\*



**Diffused Silver**  
Metallic body colour\*



**Guard**  
Metallic body colour\*



**Magnetic**  
Metallic body colour\*

**Note** The images used are to illustrate body colours only and may not reflect the vehicle described. Colours and trims reproduced within this brochure may vary from the actual colours, due to the limitations of the printing processes used.  
\*Metallic and mica body colours are options, at extra cost.



# Personalise

### Alloy wheels

16" 5x2-spoke alloy wheels, painted Sparkle Silver (standard on Limited, option on Trend) with locking wheel nuts (standard).

### Q-Top® (Q-Tech) roof gallery

Lightweight aluminium construction allows additional load\*. Ideal for transportation of large, long or bulky items and gives you more flexibility in your daily business (accessory). Also available with a ladder roller at the rear end for easier loading. (Accessory)

### Q-Top® (Q-Tech) ladder roller for Q-Top® (Q-Tech) roof gallery

Rear ladder roller for easier loading and unloading. (Accessory)

### Base roof carrier, lockable

Roof carrier is the base for various roof transportation attachments. Roof carrier can be extended with a fourth bar for L2 models. (Accessory)



### Thule® Professional roof attachments

Provides maximum flexibility to suit any transportation need with modular attachments, such as (sliding) ladder holder, load stops, roller, eye bolt and ratchet tie-down. (Accessories)

### Rear window protection grille

Grille fixes to inside of rear windows for enhanced security without obscuring rearward vision. (Option and accessory)

### Rear ladder

For easy access to the roof. (Accessory)

### ClimAir® wind deflectors

Reduces wind turbulence and noise, allowing you a more enjoyable drive with the front windows down, even during light rain. (Accessory)

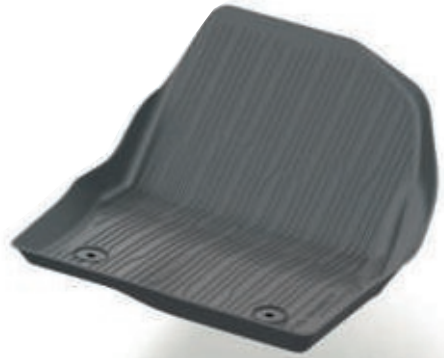
### Xvision+ parking distance sensors

An audible warning helps you to judge parking distances. (Accessory)

### Bosch® reverse warning device

Linked to reverse gear. Provides an audible warning to pedestrians when the vehicle is reversing. (Accessory)

**Note** Technical information for vehicle converters can be found online via the Body and Equipment Mounting Manual at [www.etis.ford.com](http://www.etis.ford.com) ; go to >information > >vehicle conversions.



### All-weather floor mats

The tray-style all-weather floor mats with Transit Connect nameplate are tailor-made to fit perfectly and protect against dirt and damp. The driver's mat is securely fixed directly onto the vehicle's floor to help prevent it from slipping. (Option and accessory)



### Tow bar, fixed or detachable

Subjected to rigorous testing to ensure the highest safety standards. Towing capacity is up to 1,500 kg\*. (Option and accessory)

*\*Towing and load capacity depends on engine and vehicle series, please refer to vehicle weight and load specifications.*



### Mudflaps

Contoured mudflaps help to protect the bodywork of your Transit Connect from stone chips and road spray. Available as sets for front and rear. (Option and accessory)

♦Item covered by third party supplier's warranty, please see back cover for details.

For more accessories for your Ford Transit Connect visit [www.ford-accessories.ie](http://www.ford-accessories.ie)

For a range of Ford branded items – from clothing to lifestyle products and model cars – visit [www.fordlifestylecollection.com](http://www.fordlifestylecollection.com)





# Keep your business moving.

## Ford Service

Discover the valuable benefits of a Ford Service.

Designed to keep you on the road and your running costs low, a Ford Service is delivered by the experts and available exclusively through our dealer network.

### Features of Ford Service:

- Genuine Ford parts quality
- Ford-trained technicians
- Speedy and accurate Ford diagnostics
- Free Video Check
- Electronic Vehicle Health Check (eCheck)
- Collection and delivery\*\*
- Interim checks for optimum vehicle performance
- Unscheduled repairs
- Priority treatment for urgent repairs
- Free Pan-European Roadside Assistance

Efficiency, accuracy and convenience are at the heart of the Ford service promise. So, whether it's servicing, maintenance or repair you need, be sure to come and see us.

For more information and to find your nearest participating Ford Service centre, visit the aftersales support section at [www.ford.ie](http://www.ford.ie)

### Commercial Vehicle Finance

When it comes to financing your Ford Commercial Vehicle, our size and expertise means we're well placed to provide you with a wide range of finance products. Ford Credit provides a range of finance products for your vehicle as a business user. For more information about the finance products provided by Ford Credit visit [www.ford.ie](http://www.ford.ie).

The credit provider of these products is Bank of Ireland Leasing Limited, trading as Ford Credit. The FORD and FORD CREDIT trademarks are owned by the Ford Motor Company and its affiliates are used under license.

Lending criteria and terms and conditions apply. Applicants must be aged 18 or over. The information is for illustrative purposes only and does not constitute an offer.

Warning: You may have to pay charges if you repay early, in full or in part, a fixed rate credit facility.

### FORD PROTECT

**Extend your warranty up to 7 years with Ford Protect.**

Extend your standard 2-year warranty and enjoy worry-free motoring for many years to come. Ford Protect provides a range of key benefits including:

- High flexibility in duration and mileage
- Attractive annual fees
- Protection on trips abroad
- Inflation proof: all increases in repair costs are covered
- Prolonged lifespan of your Ford vehicle
- Protects your vehicle resale value

\*\*Collection and delivery takes place on appointment and within a reasonable travelling time (maybe at an additional cost – please consult your service advisor). We even wash your vehicle so that it looks its best.



Van



Double Cab-in-Van



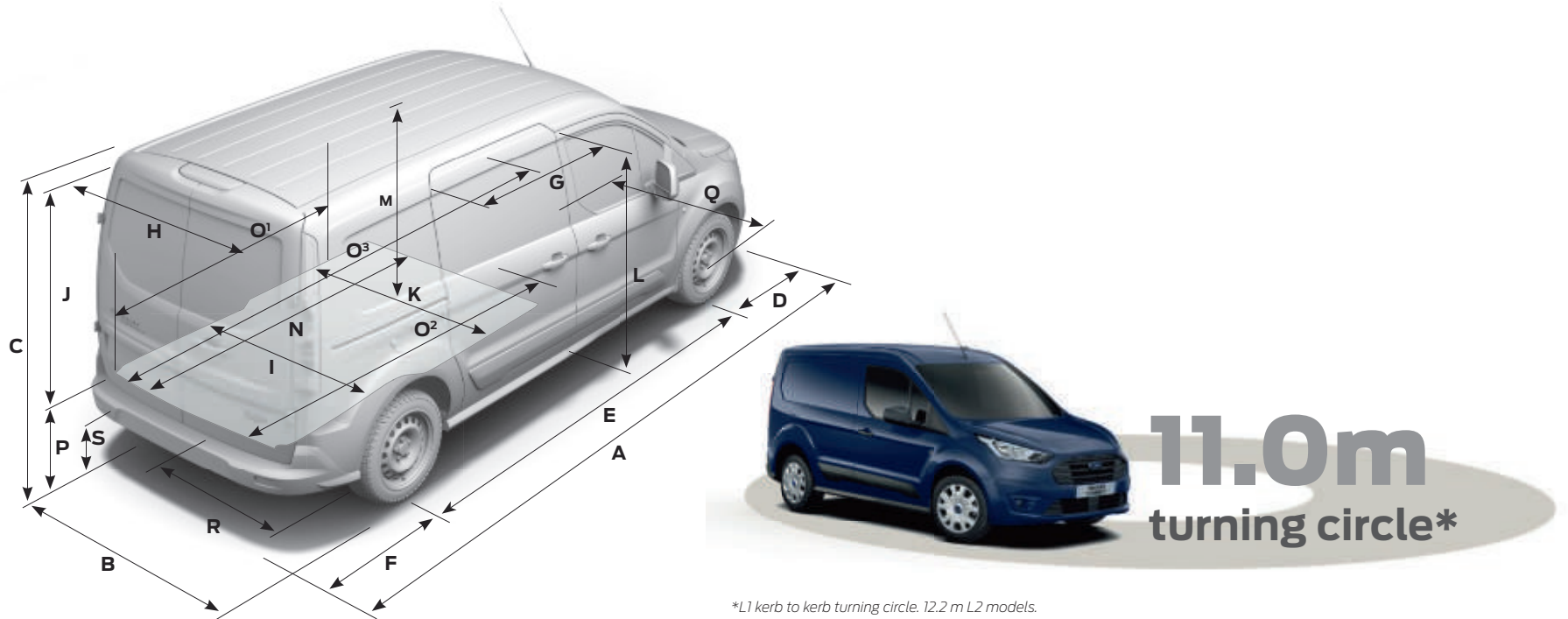
**Note:** DCiV loadcube shown with 2nd row bulkhead fitted.

Connect series dimensions

		Transit Connect L1	Transit Connect L2	Transit Connect DCiV (Crew Van) L1	Transit Connect (Crew Van) L2
<b>A</b>	Overall length	4425	4825	4425	4825
<b>B</b>	Overall width (mirrors folded)	1967	1967	1967	1967
<b>B</b>	Overall width (mirrors unfolded)	2137	2137	2137	2137
<b>C</b>	Overall height (unladen)	1830	1828	1819	1820
<b>D</b>	Front overhang	885	885	885	885
<b>E</b>	Wheelbase	2662	3062	2662	3062
<b>F</b>	Rear overhang	878	878	878	878
<b>G</b>	Side door entry width	612	839	612	839
<b>G</b>	Side door entry width (Van with bulkhead)	433	660	–	–
<b>H</b>	Rear door opening width below belt	1248	1248	1248	1248
<b>I</b>	Loadspace width between wheel arches	1249	1249	1193	1193
<b>J</b>	Rear door opening height (at vehicle center line)	1202	1202	1150	1154
<b>K</b>	Loadspace width at floor	1543	1496	1533	1533
<b>L</b>	Side door opening height	1228	1228	1228	1228
<b>M</b>	Loadspace floor to roof	1269	1269	1237	1267
<b>N</b>	Loadspace length maximum to bulkhead	1786	2152	1394	2164
<b>O<sup>1</sup></b>	Loadspace length (with bulkhead, laden to belt line)	1558	1958	–	–
<b>O<sup>2</sup></b>	Loadspace length (back of front seat, at floor)	1831	2231	–	–
<b>O<sup>3</sup></b>	Loadspace length (max, with load through bulkhead)	3000	3400	–	–
<b>P</b>	Loading height (unladen)	599	599	593	586
<b>Q</b>	Front track	1568	1568	1568	1568
<b>R</b>	Rear track	1582	1582	1582	1582
<b>S</b>	Ground clearance (unladen)	148	149	144	144
Capacity					
	Cargo volume behind bulkhead (VDA/SAE)	2.6/2.9 cu.m	3.2/3.6 cu.m	– /1.2 cu.m	– /1.6 cu.m
	Cargo volume less bulkhead (SAE)	3.0 cu.m	3.7 cu.m	–	–
	Cargo volume less bulkhead, with front seat folded (SAE)	3.7 cu.m	4.4 cu.m	–	–

	Transit Connect L1	Transit Connect L2	Transit Connect DCiV (Crew Van) L1	Transit Connect (Crew Van) L2
Turning circle (m)				
Kerb to kerb	11.0	12.2	11.0	12.2
Wall to wall	11.7	12.5	11.7	12.5
Additional information				
Interior – Front				
Effective headroom	1190	1190	1190	1190
Maximum effective leg room	1027	1027	1074	1074
Shoulder room	1464	1464	1464	1464
Hip room	1376	1376	1376	1376

**L1** = Short wheelbase, **L2** = Long wheelbase. All dimensions shown in mm are subject to manufacturing tolerances and refer to minimum specification models and do not include additional equipment. These illustrations are for guidance only. Dimensions may vary dependent on the model and equipment fitted.





# Get the most from your new Ford

We want to help you get the most from your new Ford. And to do that, you need to know how much it is designed to carry safely, both in terms of payload and load volume. Your Ford Commercial Vehicle Dealer can provide professional advice on important specification aspects, and help to find the right van for your budget and business needs.

**The Ford Transit Connect is designed to carry cargo – and lots of it**

Choosing a new van is an important decision with lots of factors to be considered. While some aspects, like selecting the most appropriate derivative, identifying the intended primary use and determining loadspace compartment size are relatively simple, others, such as calculating payload are more complex.

**Payload capacity**

To calculate payload, you need to know two things: the vehicle's gross vehicle mass (GVM) and its kerb mass.

**Gross Vehicle Mass (GVM)**

GVM is the maximum permissible weight of the vehicle when loaded and ready to go – that includes the weight of the vehicle itself, ancillaries, driver and crew (assuming the industry standard weight of 75 kg/person), fluids, fuel tank 90% full (1 litre of diesel = approximately 0.85 kg), optional and aftermarket equipment, and cargo.

**Kerb mass**

Kerb mass is the weight of a standard-specification Base series vehicle, including fluids and fuel tank 90% full, but without the driver, crew or cargo. If you intend to load the vehicle close to its maximum capacity, it is recommended that you add a margin for error of 5% of the kerb mass to the kerb mass figure before calculating payload, to reduce the risk of overloading.

**Payload** is the difference between the two.

**Gross vehicle mass minus kerb mass = payload**

So, to help you choose the right vehicle for your needs, here are some more detailed explanations about the factors that can influence a vehicle's payload. These include, but are not limited to:

**Driver and crew**

We calculate the weight of the driver and crew based on the industry-standard weight of 75 kg/person. Remember that the driver and crew are not included in the kerb mass figure, so when a driver or crew boards the vehicle, its payload will be reduced accordingly.

**Factory-fitted options**

Most factory-fitted options will affect a vehicle's payload. For example, air conditioning can add approximately 13 kg to a vehicle's weight, and therefore reduce its payload accordingly.

**Series**

All kerb masses quoted in this brochure are for standard-specification Base series models. Trend series models will generally weigh more than Base series due to the increased level of features and equipment.

**Manufacturing tolerances**

Variations in manufacturing and production processes mean that no two vehicles are likely to weigh exactly the same. It must be noted that actual weight will always be subject to manufacturing tolerances which may result in payload variations between the figures in this brochure and actual weight. NB: It is the responsibility of the vehicle operator to ensure their vehicles are legally compliant for road use.

**Accessories and aftermarket conversions**

It is important to think carefully about what to do with your vehicle after you take delivery. Any accessories fitted or aftermarket conversions to the vehicle may adversely affect its payload. Please speak to your Ford Commercial Vehicle Dealer for more information and advice.

If payload is critical to your business, or if you plan to carry cargo at, or close to, the vehicle's maximum capacity, your Ford Commercial Vehicle Dealer can help. Using their specialist expertise and knowledge, they can advise you on the exact specification of vehicle required to meet your individual business needs.

**Configure your van to suit your job**

Ford Commercial Vehicles are available with a wide range of standard and optional features. Your Ford Commercial Vehicle Dealer can help you ensure that you specify the right vehicle features for your specific business needs, including technical items to aid aftermarket fitment of specialist equipment or conversion.

## Weights and loads

### Reality check. Making fuel economy figures more realistic.

From 1 September 2017, certain new vehicles will be type-approved using the Worldwide Harmonised Light Vehicle Test Procedure (WLTP) according to (EU) 2017/1151, as last amended, which is a new, more realistic test procedure for measuring fuel consumption and CO<sub>2</sub> emissions. From 1 September 2018 the WLTP will fully replace the New European Drive Cycle (NEDC), which is the current test procedure. During NEDC Phase-out, WLTP fuel consumption and CO<sub>2</sub> emissions are being correlated back to NEDC. There will be some variance to the previous fuel economy and emissions as some elements of the tests have altered i.e., same car might have different reported fuel consumption and CO<sub>2</sub> emissions.

	Fuel	Transmission	Gross payload (kg) <sup>o</sup>	Gross vehicle mass (kg)	Kerb mass – excluding driver (kg) <sup>★</sup>	Front axle kerb mass (kg)	Rear axle kerb mass (kg)	Axle ratio <sup>o</sup>	Max GTM (kg) with quoted axle ratio	Trailer plate (kg) Braked (unbraked)	CO <sub>2</sub> emissions	Fuel consumption in L/100 km(mpg) <sup>o</sup> <sup>o</sup>	Urban	Extra Urban	Combined
200 L1 Transit Connect															
1.0 Ford EcoBoost 100 PS (74 kW)	Petrol	6-speed manual	662	2090	1428	819	609	4.56	2900	1205 (735)	146	7.1(39.8)	5.9(47.9)	6.4(44.1)	
1.5 TDCi EcoBlue 75 PS (55 kW)	Diesel	6-speed manual	651	2155	1504	888	616	3.68	2880	1110 (750)	124	5.0(56.5)	4.6(61.4)	4.7(60.1)	
1.5 TDCi EcoBlue 100 PS (74 kW)	Diesel	6-speed manual	656	2160	1504	888	616	3.52	2980	1210 (750)	123	5.0(56.5)	4.5(62.8)	4.7(60.1)	
1.5 TDCi EcoBlue 120 PS (88 kW) Limited	Diesel	6-speed manual	718	2245	1527	900	628	3.68	3170	1408 (750)	130	5.3(53.3)	4.6(61.4)	5.0(56.5)	
220 L1 Transit Connect High Payload															
1.5 TDCi EcoBlue 75 PS (55 kW)	Diesel	6-speed manual	860	2370	1510	890	620	3.68	2880	1103 (750)	124	5.0(56.5)	4.6(61.4)	4.7(60.1)	
1.5 TDCi EcoBlue 100 PS (74 kW)	Diesel	6-speed manual	865	2375	1510	890	620	3.52	2980	1203 (750)	123	5.0(56.5)	4.5(62.8)	4.7(60.1)	
1.5 TDCi EcoBlue 120 PS (88 kW) Trend	Diesel	8-speed automatic	859	2405	1546	920	626	3.80	3260	1459 (750)	135	5.2(54.3)	5.0(56.5)	5.1(55.4)	
1.5 TDCi EcoBlue 120 PS (88 kW) Trend	Diesel	6-speed manual	863	2385	1522	886	636	3.68	3170	1403 (750)	130	5.3(53.3)	4.6(61.4)	5.0(56.5)	

**L1** = Short wheelbase, **L2** = Long wheelbase. **Note:** All diesel engines include Diesel Particulate Filter (cDPF). **Kerb mass** = The weight of the complete vehicle and all equipment including 90% fuel and water, but without the payload, driver or any passengers. **GVM** = Gross vehicle mass, the total permissible all-up weight of a vehicle – i.e. with body, payload, ancillaries, fuel, oil, water, driver and passengers. **GTM** = Gross train mass, the total permissible all-up weight of a vehicle (see GVM) together with its trailer and load. **Gross Payload** = Gross vehicle mass less kerb mass. All kerb masses quoted in this brochure are for Base models with minimum equipment. Trend, Limited and Sport models will have greater kerb masses and therefore lower payloads, due to the increased amount of standard equipment. Any additional options specified on the vehicle will reduce the payload accordingly. It must be noted that actual weight will always be subject to manufacturing tolerances which may result in payload variations between this table of figures and actual weight. NB: It is the responsibility of the vehicle operator to ensure their vehicles are legally compliant for road use. <sup>oo</sup>The declared fuel consumptions and CO<sub>2</sub> emissions for Stage 6 Light Duty Truck engines are measured according to the technical requirements and specifications of European Regulation (EC) 715/2007 and latest amendment. Fuel consumption and CO<sub>2</sub> emissions are specified for a vehicle variant and not for a single car. The applied standard test procedure enables a comparison between different vehicle types; the specification and options selected may have an effect i.e. on vehicle weight and therefore on the emissions and fuel economy of the vehicle and also may influence the figures that appear in the individual vehicle documentation. This information is not part of any product offer made. Real world fuel consumption can vary as the fuel efficiency of a vehicle is influenced by (individual) vehicle configurations, driving behaviour, use of technical equipment such as air conditioning, as well as other non-technical factors.

\*Combined fuel consumption and CO<sub>2</sub> emissions for L1 Van (N1) with 1.5L Ford EcoBlue 100 PS, Auto Start-Stop and 100 km/h speed limiter.





Weights and loads

												Fuel consumption in L/100 km (mpg) <sup>000</sup>		
	Fuel	Transmission	Gross payload (kg) <sup>o</sup>	Gross vehicle mass (kg)	Kerb mass – excluding driver (kg) <sup>•</sup>	Front axle kerb mass (kg)	Rear axle kerb mass (kg)	Axle ratio <sup>oo</sup>	Max. GTM (kg) with quoted axle ratio	Trailer plate (kg) Braked (unbraked)	CO <sub>2</sub> emissions	Urban	Extra Urban	Combined
210 L2 Transit Connect														
1.0 Ford EcoBoost 100 PS (74 kW)	Petrol	6-speed manual	680	2165	1485	859	626	4.56	2900	1143 (750)	146	7.1(39.8)	5.9(47.9)	6.4(44.1)
1.5 TDCi EcoBlue 75 PS (55 kW)	Diesel	6-speed manual	684	2260	1576	936	640	3.68	2880	1033 (750)	124	5.0(56.5)	4.6(61.4)	4.7(60.1)
1.5 TDCi EcoBlue 100 PS (74 kW)	Diesel	6-speed manual	690	2255	1565	931	634	3.68	2980	1143 (750)	123	5.0(56.5)	4.5(62.8)	4.7(60.1)
1.5 TDCi EcoBlue 120 PS (88 kW)	Diesel	6-speed manual	689	2255	1566	924	642	3.68	3170	1332 (750)	130	5.3(53.3)	4.6(61.4)	5.0(56.5)
240 L2 Transit Connect High Payload														
1.5 TDCi EcoBlue 100 PS (74 kW)	Diesel	6-speed manual	834	2405	1571	933	638	3.68	2980	1136 (750)	123	5.0(56.5)	4.5(62.8)	4.7(60.1)
1.5 TDCi EcoBlue 120 PS (88 kW)	Diesel	6-speed manual	833	2405	1572	926	646	3.68	3170	1326 (750)	130	5.3(53.3)	4.6(61.4)	5.0(56.5)
230 L2 Transit Connect Crew Van (DCiV)														
1.5 TDCi EcoBlue 100 PS (74 kW)	Diesel	6-speed manual	738	2400	1662	976	686	3.68	3050	1143 (750)	134	5.6(50.4)	4.8(58.9)	5.1(55.4)

**L1** = Short wheelbase, **L2** = Long wheelbase. **Note:** All diesel engines include Diesel Particulate Filter (cDPF). **Kerb mass** = The weight of the complete vehicle and all equipment including 90% fuel and water, but without the payload, driver or any passengers. **GVM** = Gross vehicle mass, the total permissible all-up weight of a vehicle – i.e. with body, payload, ancillaries, fuel, oil, water, driver and passengers. **GTM** = Gross train mass, the total permissible all-up weight of a vehicle (see GVM) together with its trailer and load. **Gross Payload** = Gross vehicle mass less kerb mass. All kerb masses quoted in this brochure are for Base models with minimum equipment. Trend, Limited and Sport models will have greater kerb masses and therefore lower payloads, due to the increased amount of standard equipment. Any additional options specified on the vehicle will reduce the payload accordingly. It must be noted that actual weight will always be subject to manufacturing tolerances which may result in payload variations between this table of figures and actual weight. NB: It is the responsibility of the vehicle operator to ensure their vehicles are legally compliant for road use. <sup>oo</sup>The declared fuel consumptions and CO<sub>2</sub> emissions for Stage 6 Light Duty Truck engines are measured according to the technical requirements and specifications of European Regulation (EC) 715/2007 and latest amendment. Fuel consumption and CO<sub>2</sub> emissions are specified for a vehicle variant and not for a single car. The applied standard test procedure enables a comparison between different vehicle types; the specification and options selected may have an effect i.e. on vehicle weight and therefore on the emissions and fuel economy of the vehicle and also may influence the figures that appear in the individual vehicle documentation. This information is not part of any product offer made. Real world fuel consumption can vary as the fuel efficiency of a vehicle is influenced by (individual) vehicle configurations, driving behaviour, use of technical equipment such as air conditioning, as well as other non-technical factors.

Engine data

	Transmission	Engine technical features		Maximum power <sup>r</sup>	Maximum torque <sup>s</sup>
1.0 100 PS Ford EcoBoost (74 kW) Petrol Stage 6.2	6-speed manual	3 cylinders in line, DOHC, 12 valves, alloy cylinder head, direct injection with high pressure, common rail fuel injection system, turbocharger with intercooler		100 PS (74 kW)	170 Nm (1400-4000)
1.5 75 PS Ford EcoBlue (55 kW) Diesel Stage 6.2	6-speed manual	4 cylinders in line, DOHC, 16 valves, aluminium cylinder block with open deck, direct injection via solenoid injectors, common rail 3rd generation fuel injection system, fixed geometry turbocharger with intercooler, variable displacement oil pump, thermal override, 'split' sump, electronic actuator and controllable water cooled charge air cooler		75 PS (55 kW)	220 Nm (1750-2000)
1.5 100 PS Ford EcoBlue (74 kW) Diesel Stage 6.2 VI	6-speed manual	4 cylinders in line, DOHC, 16 valves, aluminium cylinder block with open deck, direct injection via solenoid injectors, common rail 3rd generation fuel injection system, fixed geometry turbocharger with intercooler, variable displacement oil pump, thermal override, 'split' sump, electronic actuator and controllable water cooled charge air cooler		100 PS (74 kW)	240 Nm (2000-2500)
1.5 100 PS Ford EcoBlue (74 kW) Diesel Stage 6.2 VI	8-speed automatic	4 cylinders in line, DOHC, 16 valves, aluminium cylinder block with open deck, direct injection via solenoid injectors, common rail 3rd generation fuel injection system, fixed geometry turbocharger with intercooler, variable displacement oil pump, thermal override, 'split' sump, electronic actuator and controllable water cooled charge air cooler		100 PS (74 kW)	240 Nm (2000-2500)
1.5 120 PS Ford EcoBlue (88 kW) Diesel Stage 6.2	6-speed manual	4 cylinders in line, DOHC, 16 valves, aluminium cylinder block with open deck, direct injection via solenoid injectors, common rail 3rd generation fuel injection system, fixed geometry turbocharger with intercooler, variable displacement oil pump, thermal override, 'split' sump, electronic actuator and controllable water cooled charge air cooler		120 PS (88 kW)	270 Nm (1750-2000)
1.5 120 PS Ford EcoBlue (88 kW) Diesel Stage 6.2	8-speed automatic	4 cylinders in line, DOHC, 16 valves, aluminium cylinder block with open deck, direct injection via solenoid injectors, common rail 3rd generation fuel injection system, fixed geometry turbocharger with intercooler, variable displacement oil pump, thermal override, 'split' sump, electronic actuator and controllable water cooled charge air cooler		120 PS (88 kW)	270 Nm (1750-2000)

<sup>o</sup>Tested in accordance with ISO 1585. **Note** all diesel engines are fitted with a standard cDPF (coated diesel particulate filter).



Sub 1-litre  
Ford 1.0 litre EcoBoost



Model availabilty

		L1						L2					
	Transmission	Base	Base High Payload	Trend	Trend High Payload	Limited	Sport	Base	Base High Payload	Trend	Trend High Payload	Limited	Sport
Ford Transit Connect/High Payload													
1.0 Ford EcoBoost 100 PS (74 kW)	6-speed manual	●	–	●	–	–	–	●	–	●	–	–	–
1.5 TDCi EcoBlue 75 PS (55 kW)	6-speed manual	●	●	●	–	–	–	●	–	–	–	–	–
1.5 TDCi EcoBlue 100 PS (74 kW)	6-speed manual	●	●	●	●	–	–	●	●	●	●	–	–
1.5 TDCi EcoBlue 100 PS (74 kW)	8-speed automatic	–	–	–	–	–	–	–	–	–	–	–	–
1.5 TDCi EcoBlue 120 PS (88 kW)	6-speed manual	–	–	●	●	●	●	●	●	–	●	●	●
1.5 TDCi EcoBlue 120 PS (88 kW)	8-speed automatic	–	–	–	●	–	–	–	–	–	–	–	–
Ford Transit Connect Double Cab in Van (DCiV)													
1.0 Ford EcoBoost 100 PS (74 kW)	6-speed manual	–	–	–	–	–	–	–	–	–	–	–	–
1.5 TDCi EcoBlue 75 PS (55 kW)	6-speed manual	–	–	–	–	–	–	–	–	–	–	–	–
1.5 TDCi EcoBlue 100 PS (74 kW)	6-speed manual	–	–	–	–	–	–	●	–	●	–	–	–
1.5 TDCi EcoBlue 100 PS (74 kW)	8-speed automatic	–	–	–	–	–	–	–	–	–	–	–	–
1.5 TDCi EcoBlue 120 PS (88 kW)	6-speed manual	–	–	–	–	–	–	–	–	–	–	–	–
1.5 TDCi EcoBlue 120 PS (88 kW)	8-speed automatic	–	–	–	–	–	–	–	–	–	–	–	–

● = Available **Note:** All diesel engines are fitted with a standard cDPF (catalysed diesel particulate filter). **L1** = Short wheelbase, **L2** = Long wheelbase.

Styling and appearance

	Van				DCiV		
	Base	Trend	Limited	Sport	Base	Trend	MFC Code
Wheels							
Steel spare wheel (available as a pack for DCiV Base)	●	●	●	○	□	–	D17AD/AA7AF
Steel wheels – 16"x 6½" painted Shadow Silver (fitted with 205/60 tyres)	●	–	–	–	●	–	D5AAG/D2XD8
Steel wheel and wheel covers – 16"x 6½" painted Sparkle Silver (fitted with 205/60 tyres) (not available on DCiV Trend with automatic transmission)	–	●	–	–	–	●/–	D2XAD/D5AA3
Alloy Wheel – 16"x6½" painted Sparkle Silver (fitted with 205/60 tyres) (Standard on DCiV Trend with automatic transmission)	–	○	●	–	–	–/●	D2XA1
Alloy Wheel – 16"x6½" painted Dark Stainless (fitted with 205/60 tyres)	–	–	–	●	–	–	D2XBG
Delete spare wheel	○	○	○	–	–	–	J41AB
All Weather tyres	○	○	○	–	○	○	
Mud and Snow tyres	○	○	○	○	○	○	D3UAE
Design features							
Sports Styling Pack	–	–	–	●	–	–	ACLA4
Front bumper – Self colour	●	–	–	–	●	–	CLFGB
Front bumper – Body colour	–	●	●	●	–	●	CLFGF
Front bumper – Lower scuff plate	–	–	–	●	–	–	
Rear bumper – Self colour	●	●	●	–	●	●	CLMCC
Rear bumper – Body colour with lower scuff plate	–	–	–	●	–	–	CLMAK
Rear bumper end caps – Self colour	●	–	–	–	●	–	CLEAB
Rear bumper end caps – Body colour	–	●	●	●	–	●	CLEAC
Exterior door handles – Self colour	●	●	–	–	●	●	CAA AE
Exterior door handles – Body colour	–	–	●	●	–	–	CA AAC
Cargo door/liftgate handle – Self colour	●	●	–	–	●	●	CACA F
Cargo door/liftgate handle – Body colour	–	–	●	●	–	–	CACA C
Front grille – 3 bar, Self colour	●	●	●	●	●	●	BLDCX
Wide bodyside moulding – Self colour	●	●	–	–	●	●	BMBAC
Wide bodyside moulding – Body colour	–	–	●	●	–	–	BMBBL
Front lip spoiler (not available with petrol engines)	●	●	●	●	●	●	FHYAB
Mudflaps – Front and rear	○	○	○	●	○	○	A3EAB/AIKAB, FCSD-E
Glazed rear window	○	○	–	–	○	○	B3HAC
Roof rails (not available on L2 DCiV)	○	○	○	●	○	○	BLYA3, FCSD-E
Roof rails and cross bars (not available on L2 DCiV)	–	–	–	–	○	○	BLYAB
Interior door handle – Black	●	●	–	–	●	●	BCFAC
Interior door handle – Chrome finish	–	–	●	●	–	–	BCFAB

● = Standard, ○ = Option, at extra cost, □ = Part of an option pack, at extra cost.





## Driving experience

	Van				DCiV		
	Base	Trend	Limited	Sport	Base	Trend	MFCCode
Driver Assistance							
Parking distance sensors – Rear	○ / □	○ / □	●	●	○ / □	○ / □	HNKAB
Parking distance sensors – Front and rear ♦Available from November 2018 on Limited series	○ / □	○ / □	◆	□	–	○	HNLAB
Rear-view camera in mirror display	○	○	○	○	○	○	J3KAM
Active Park Assist (includes front and rear parking sensors) ♦Available from November 2018 on Limited series	○	○	◆	○	○	○	HNSAC
Electric power-assisted steering (EPAS)	●	●	●	●	●	●	std
Hill Start Assist	●	●	●	●	●	●	A54AB
Lane-Keeping Aid (includes Driver Alert System)	○ / □	○ / □	○ / □	○ / □	○ / □	○ / □	HLNAB
Active City Stop	○	○	○	○	○	○	FBFAB
Pre-collision assist with pedestrian detection. Must be ordered with Lane-Keeping Aid at extra cost	○ / □	○ / □	○ / □	○ / □	○ / □	○ / □	FBFAC
Blind Spot Information System (BLIS) includes power fold and heated mirrors	○	○	○	○	–	–	HLLAD
Cruise control with Adjustable Speed Limiter	○ / □	○ / □	●	●	○ / □	○ / □	GTD AJ
Adaptive Cruise Control (includes Follow Distance Indicator, Active City Stop and Advanced Emergency Braking)	○	○	○	○	○	○	GTD AC
Intelligent Speed Assist. Must be ordered in conjunction with either Cruise Control or Adaptive Cruise Control	○	○	○	○	○	○	GTC AV
Trailer Sway Control	□	□	□	□	□	□	C2D AB
Speed Limiter – 62 mph/100 km/h	○	○	○	○	○	○	DCF AG

## Driving experience

	Van				DCiV		
	Base	Trend	Limited	Sport	Base	Trend	MFCCode
Exterior Lighting							
Fog lights – Front	–	●	–	–	–	●	JBKAB
Fog lights – Adaptive cornering lights	○	○	●	●	□	○	JBKAL
Fog lights – Rear	●	●	●	●	●	●	JDJAB
Headlights – Halogen, side lights, rear fog light, reversing light	●	●	●	●	●	●	JBBAB
Headlights – Automatic on/off	–	○	●	●	○	●	JEDAD
Headlights – Courtesy delay (not available on Van Base)	–	□	●	●	□ / –	□	JBIAB
Headlights – Daytime running lights	●	●	●	●	●	●	JBCAB
High Intensity Discharge headlamps including LED Daytime running lamps. ♦Available from November 2018 on Limited series	–	○	♦	○	–	○	JBBAC
Suspension							
Twistbeam	●	●	●	●	●	●	std
Instruments and Controls							
Tyre Pressure Monitoring System (TPMS)	○	○	○	○	○	○	HJCAB

● = Standard, ○ = Option, at extra cost, □ = Part of an option pack, at extra cost. **L1** = Short wheelbase, **L2** = Long wheelbase.

**Automatic transmission**  
(Option, diesel models only)



## Performance and efficiency

	Van				DCiV		
	Base	Trend	Limited	Sport	Base	Trend	MFC Code
Engine							
Ford Easy Fuel System	●	●	●	●	●	●	std
Fuel tank – 60 litres	●	●	●	●	●	●	std
AdBlue® tank – 17 litres (standard with diesel engines)	●	●	●	●	●	●	
6-speed manual	●	●	●	●	●	●	TR-E8
8-speed automatic	○	○	○	–	○	○	TR-GM
Technology							
Active Grille Shutter	●	●	●	●	●	●	BLHAB
Auto Start-Stop	●	●	●	●	●	●	DECAU
Wind stabilisation	○	○	○	○	○	○	FEAA2
Programmable Interface Module (Diesel only)	○	○	○	○	○	○	JRSAB

● = Standard, ○ = Option, at extra cost, □ = Part of an option pack, at extra cost. **L1** = Short wheelbase, **L2** = Long wheelbase.



Comfort and convenience

	Van				DCiV		
	Base	Trend	Limited	Sport	Base	Trend	MFC Code
Interior Convenience							
Instrument panel storage box	●	●	●	●	●	●	BBMAB
Dual front cup holders	●	●	●	●	●	●	B5ZAE
Glovebox lid	□	●	●	●	●	●	B5LAC
Single passenger seat centre console	●	●	●	●	●	●	B5WCA
Dual passenger under seat console	○	○	○	–	–	–	B5WCC
Smokers pack	○	○	○	○	○	○	J3CAB
Audio and Communication Systems							
DAB Radio, steering wheel radio controls includes message centre, four speakers, AUX, MP3 capability and Bluetooth® ICE pack 2	●	–	–	–	●	–	ICFAC Ice 2
DAB Radio 4.2" TFT display, including message centre, four speakers, AUX and MP3 capability and Ford SYNC including Emergency Assistance**, Bluetooth® and Voice Control and audible text messaging, USB and Privacy mode. ICE pack 154	○	●	●	●	○	●	ICFFZ ICE 154
DAB Radio, 6" TFT Touchscreen display, diversity antenna, four speakers and MP3 capability and Ford SYNC 3, Voice Control, Touchscreen, Apple CarPlay, Android Auto, Emergency Assistance**, hands-free calling, GPS, Bluetooth® and Voice Control and audible text messaging, 2x USB and fixed rear-view camera. ICE pack 10	○	○	○	○	○	○	ICFAL ICE 10
DAB Radio 6" TFT Touchscreen display with Satellite Navigation, four speakers and MP3 capability and Ford SYNC 3 with Navigation Centre, Voice Control, Touchscreen, Apple CarPlay, Android Auto, Emergency Assistance**, hands-free calling, GPS, Bluetooth® and Voice Control and audible text messaging, 2x USB and fixed rear-view camera. ICE pack 9	○	○	○	○	○	○	ICFAK 9
CD player. Not available with Wireless charging	○	○	○	○	○	○	IBPAC
MyFord Dock (Device dock). Only in conjunction with ICE packs 2 or 30	○	–	–	–	○	–	C2PAB
Wireless charging pad. Not available with CD player	○	○	○	○	○	○	IEXAB
FordPass Connect (embeddem modem). Must be ordered with ICE pack 9, 10 or 154 on Base series. Not available with Device dock	○	○	○	○	○	○	IEPAL
Climate Control							
Manual air conditioning – Manual with smart recirculation function	○ / □	○ / □	●	–	○	○	AC--S
Air conditioning – Dual-zone Electronic Automatic Temperature Control (DEATC) with electronic recirculation facility	–	○	○	●	–	–	AC--G
Interior Lighting							
Courtesy lights – Front dome	●	–	–	–	●	–	JCFAF
Courtesy lights – Front dome light with two map lights	–	●	●	●	–	●	JCFAC
Lights – Glovebox	–	–	●	●	–	–	JCLAB
Seating							
Seat adjuster – Driver 2-way manual (fore/aft + recline)	●	–	–	–	●	–	BYPAB
Seat adjuster – Driver 4-way manual (fore/aft, up/down + recline)	○	●	●	●	○	●	BYPAD
Seat adjuster – Passenger 2-way manual (fore/aft + recline)	●	●	●	●	●	●	BYQAB
Individual passenger seat	●	●	●	●	●	●	FS--B
Dual passenger seat	○	○	○	–	–	–	FS--G
Passenger seat – Flip/Fold/Tumble fold flat passenger seat functionality	○	○	○	–	–	–	BYQAQ

Comfort and convenience

	Van				DCiV		
	Base	Trend	Limited	Sport	Base	Trend	MFC Code
Second row 3-across seating, folding	–	–	–	–	●	●	BVBAM
Driver lumbar seat support	○	●	●	●	○	●	BWRAB
Heated drivers seat (on Trend series this is only available in conjunction with a Dual passenger seat)	–	○	●	●	–	–	
Heated passenger seat	–	–	●	●	–	–	
Instruments and Controls							
Door mirrors – Manual door mirror, self colour with Blind Spot Information System	●	–	–	–	●	–	BSHA7
Large Wing Mirrors with small secondary blind spot eliminator mirror	○	○	○	○	○	○	BSYAC
Door mirrors – Electrically-operated and heated, self colour	○ / □	●	–	–	○ / □	●	BSHAX
Body colour door mirrors – Electrically-operated, autofold on lock and heated	–	–	●	●	–	–	BSHAZ
Self colour door mirrors – Electrically-operated, autofold on lock and heated	–	○	–	–	–	○	BSHAZ
Electrically-operated, power fold heated door mirrors, with Blind Spot Information System. Self colour housing on Base and Trend; body colour housing on Limited and Sport	□	□	□	□	–	–	BSHE1 / HLLAD
Rear-view mirror – Screen mounted interior (in combination with rear windows and glazed bulkhead on Van)	●	●	–	–	●	●	BSBAB
Rear-view mirror – Auto-dimming	□	□	●	●	–	–	BSBAF
2-speed variable intermittent front wipers	●	●	–	–	●	●	CFFAB
Rain-sensing wipers (requires automatic headlight activation)	□	□	●	●	□	□	CFFAE
Rear window washer/wiper (can only be ordered with glazed rear windows)	○	○	○	○	○	○	CFEAB
Rear window – Heated (standard when glazed rear window is specified)	□	□	□	□	□	□	B3NAB
Gearshift knob – Urethane	●	●	–	–	●	●	CAEBK
Gearshift knob – Leather	–	–	●	●	–	–	CAEAB
Steering wheel – 4-spoke PU with black shells	●	●	–	–	●	●	GTAAJ
Steering wheel – 4-spoke	□	□	●	●	□	□	GTABU
Driver's window – Electrically-operated with one-touch lowering	●	●	–	–	●	●	B2CAG
Front windows – Electrically-operated with one touch up and down	□	□	●	●	–	□	B2CAF
Trip/fuel computer	●	●	●	●	●	●	HEBAD
Technology							
Quickclear heated windscreen includes heated washer jets	○	●	●	●	○	●	B3MAB
Option Packs							
City Pack (manual air conditioning and Speed Limiter) (Available on regular payload 200 and 210 GVM series only)	○	○	–	–	–	–	AGJAB

● = Standard, ○ = Option, at extra cost, □ = Part of an option pack, at extra cost. The Bluetooth® word mark and logos are owned by the Bluetooth SIG, Inc. and any use of such marks by Ford Motor Company is under licence. Other trademarks and trade names are those of their respective owners. \*\*Ford Emergency Assistance is an innovative SYNC feature that uses a Bluetooth®-paired and connected mobile phone to help vehicle occupants initiate a direct call to the local Communications Centre, following a vehicle crash event involving an airbag deployment or fuel pump shut off. The feature operates in more than 40 European countries and regions.





Safety and security

	Van				DCiV		MFCCode
	Base	Trend	Limited	Sport	Base	Trend	
Safety							
Brake light – Rear high-mounted	●	●	●	●	●	●	JDDAB
Seat belts – Front, 3 point, with seat pre-tensioner, height adjust and load limiters	●	●	●	●	●	●	std
Driver beltreminder	●	●	●	●	●	●	BY5AI/ BY5AJ
Anti-lock braking system (ABS) with electronic brake-force distribution (EBD) and Electronic Stability Control (ESC)	●	●	●	●	●	●	FEAAN
Airbag – Driver's	●	●	●	●	●	●	CPGAB
Airbag – Front passenger's* with de-activation switch	○ / □	○ / □	○ / □	○ / □	○ / □	○ / □	CPHAB
Airbags – Driver's and passenger's side airbag (side and thorax)	□	□	□	□	□	□	CPMAB/ CPNAB
Emergency Brake Assist (EBA)	●	●	●	●	●	●	FCBAD
Security							
Configurable locking 1. 2 stage unlocking: Stage 1 Driver side, Stage 2 remaining doors	○	○	○	○	○	○	CB4AB
Configurable locking 2. 2 stage unlocking: Stage 1 Passenger side, Stage 2 remaining doors	○	○	○	○	○	○	CB4AC
Locking – Auto relocking. Doors relock after 45 seconds if no door is opened	●	●	●	●	●	●	CB1AB
Locking – Power	●	●	●	●	□	□	CBAAD
Central locking – Single locking	–	–	–	–	●	●	CBAAB
Remote key and plain key	●	●	–	–	●	●	CADAE
Two remote keys (no plain key included as part of this pack)	○ / □	○ / □	●	●	○ / □	○ / □	CADAF
Fleet key	○	–	–	–	○	–	CATAB
Perimeter anti-theft alarm	○	○	–	–	○	○	HNAAD
Thatcham Category 1 Alarm	○	○	●	●	○	○	HNAAG
Security – Passive Anti-Theft System (PATS)	●	●	●	●	●	●	HNDAF
Brakes							
Power 4-wheel disc	●	●	●	●	●	●	FBAAD
Emergency Brake Warning (automatic flashing of brake lights under heavy braking)	●	●	●	●	●	●	FCCAB

● = Standard, ○ = Option, at extra cost, □ = Part of an option pack, at extra cost. **L1** = Short wheelbase, **L2** = Long wheelbase.  
\***Note: A rear-facing child seat should never be placed in the front passenger seat when the Ford vehicle is equipped with an operational front passenger's airbag.**

Utility

	Van				DCiV		MFC Code
	Base	Trend	Limited	Sport	Base	Trend	
Body							
Kerbside load door	●	●	●	●	–	–	A4LAB
Dual side loading doors	○	○	○	○	●	●	A4LAC
Unglazed rear cargo doors (hinged)	●	●	●	●	●	●	A6KAB
Glazed tailgate	○	○	–	–	–	–	A6KAC
Second row fixed side window (dual side)	–	–	–	–	○	○	B3BAC, B3AAC
Privacy glass	–	–	–	–	○	○	B2GBD
Carpet and Trim							
All weather floor mats	○	○	○	○	○	○	FIDAE
Rubber floor cover	●	●	●	●	●	●	BBKAC
Interior grab handles – Front	●	●	●	●	●	●	BEJAK
Electrical							
12 V power point (one in the instrument panel)	●	●	●	●	●	●	J3AAB
12 V power point in the load compartment ♦Available from November 2018 on Limited series	–	○	○	◆	–	○	J3FAD
230 V power inverter	○	○	○	○	–	–	HUKAD
Heavy duty battery	●	●	●	●	●	●	
Exterior Functional							
Towing hooks – Front and rear	●	●	●	●	●	●	std
Tow bar preparation kit – Allows quick installation of a tow bar. Includes Trailer Sway Control and pre-assembled trailer light module (13-pin e-Kit is required)	○	○	○	○	○	○	CIQAB
Fixed tow bar (includes 13 pin e-kit and Trailer Sway Control) – (not available with petrol or 1.5 75 PS diesel engines). Automatic transmission requires additional water cooling	○	○	○	–	○	–	CIDAB / CIDAF
Loadspace Compartment							
Load floor liner (easy clean floor) (Standard for L2 Limited from 2019 November)	○	●	●	● /–	–	–	BDIAJ
Cargo tie down hooks	●	●	●	●	●	●	A9JAE
LED loadspace lighting	○	○	○	○	–	–	JCMAD
Bulkhead – moveable full width, full height mesh	–	–	–	–	●	●	A6AAU
Bulkhead – Full width, full height steel (standard with single passenger seat)	●	●	●	●	–	–	A6AAC
Bulkhead – Full width, full height steel with fixed window (optional with single passenger seat only)	○	○	○	○	–	–	A6AAF
Bulkhead – Full width, full height steel with load through hatch (available with dual passenger seat options only)	○	○	○	–	–	–	A6AA3
Bulkhead – Full width, full height steel with load through hatch and fixed window (available with dual passenger seat options only)	○	○	○	–	–	–	A6AA4

● = Standard, ○ = Option, at extra cost, □ = Part of an option pack, at extra cost. **L1** = Short wheelbase, **L2** = Long wheelbase.





## Maximise your space

Transit Connect's driver-focused cockpit combines stylish good looks with smart stowage solutions. With plenty of space for bottles, phones and papers, it will help make your workday easy and efficient.

Bottles and beverages

Concealed area with charging point

Optimal cab stowage



## Next steps



### test drive

Visit your Ford Commercial Vehicle Dealer and test drive the Ford Transit Connect for yourself. Find your local Ford Commercial Vehicle Dealer on [www.ford.ie](http://www.ford.ie)



### build

Build and price your new Ford Transit Connect to your exact specification and see how it looks at [www.ford.ie](http://www.ford.ie)

**Stowage/Next steps 52-53**



### own

When you drive away in your new vehicle, we're with you all the way. Ford has a large authorised service network to help you keep your vehicle in the best condition. And should your new Ford ever require accident repair, a Ford Accident Repair Centre is the best place to get your vehicle back to its pre-accident condition and on the road as quickly as possible



### finance

When it comes to financing your vehicle, Ford Credit's size and expertise means they're well placed to provide you with a wide range of finance products. Ford Credit provides a range of finance products for your vehicle whether you are a private or business user.

The credit provider of these products is Bank of Ireland Leasing Ltd, trading as Ford Credit.

The FORD and FORD CREDIT trademarks are owned by Ford Motor Company and are used under licence.

For more information about the finance products provided by Ford Credit visit [www.ford.ie](http://www.ford.ie)



### contact

1890 812 813



FordPass is a new platform that will empower you to rethink the way you move. Through a collection of personal, digital and physical solutions, FordPass will provide you with more mobility options so you can go further than you thought possible. These include Live Traffic and locating parking amongst many others. Find out more at [www.ford.ie](http://www.ford.ie)



**Illustrations, descriptions and specifications.** This catalogue was correct at the time of going to print. However, Ford policy is one of continuous product development. The right is reserved to change specifications, colours and prices of the models and items illustrated and described in this publication at any time. For the latest details always consult your Ford Dealer. **Optional equipment.** Throughout this publication, wherever a feature is described as being an 'Option' or 'Option Fitment/Pack' etc, you should assume that it will be at extra cost to the base vehicle, unless specifically stated to the contrary. All models and colour combinations are subject to availability. **Note.** Some images portrayed are of a pre-production model and/or are computer generated, therefore, the design/features on the final version of the vehicle may differ in various respects. In addition, some of the features shown on the vehicles may be optional. **Note.** This brochure contains both original Ford accessories as well as a range of products from our suppliers. **Note.** The identified accessories are carefully selected third party supplier branded accessories which do not come with a Ford warranty but are instead covered by the third party supplier's own warranty, the details of which can be obtained from your Ford Dealer. **Note.** The Bluetooth® word mark and logos are owned by the Bluetooth SIG, Inc. and any use of such marks by Ford Motor Company is under licence. The iPod word mark and logos are the property of Apple Inc. Other trademarks and trade names are those of their respective owners. **Note.** Some driver assistance features and safety features described in this brochure are designed to function using sensors, whose performance may be affected under certain weather or environmental conditions.



Published by Henry Ford & Son Limited,  
Elm Court, Boreenmanna Road, Cork,  
Ireland.

BJN 206067. FoE I60E.  
PN 877505/0918/5m/IRL en

August 2018.  
© Ford Motor Company Limited.



Go Further