



NEW PEUGEOT PARTNER

PRICES, EQUIPMENT, OPTIONS & TECHNICAL SPECIFICATIONS

NOVEMBER 2019: E & OE



PEUGEOT

NEW PEUGEOT PARTNER: STANDARD SPECIFICATION ACROSS THE RANGE, FROM ACCESS TRIM

PROFESSIONAL PLUS (PROFESSIONAL +)

Comfort & Convenience

- Front parking sensors
- Dynamic rear vision, Visiopark 180 and side vision camera. Visible on a central 5" screen in place of a rear view mirror

PROFESSIONAL (ACTIVE PLUS +)

Comfort & Convenience

- Rear parking sensors

Lighting and Visibility

- Automatic windscreen wipers
- Automatic headlamps

Technology & Entertainment

- 8" capacitive colour touchscreen offering Apple CarPlay™, Android Auto with steering mounted controls, 1 USB port

Exterior Features

- 15 inch 'Milford' full wheel trims (650kg versions)
- 16 inch 'Rakiura' full wheel trims (1000kg versions)

ACTIVE PLUS (ACTIVE +)

Comfort & Convenience

- Air conditioning

Exterior Features

- Front fog lights

Interior Features

- Hard plastic floor protection in cabin area

ACTIVE (ACCESS +)

Safety and security

- Automatic electronic parking brake
- Full steel bulkhead with moduwork for extra loading length

Seating

- Comfort driver's seat with height, lumbar, rake and reach adjustment
- Multi-Flex modular folding passenger bench seat including load through bulkhead

Comfort & Convenience

- Cruise control with variable speed limiter

Exterior Features

- Nearside sliding side door (L1 models. Twin sliding doors on L2 models)

Interior Features

- Hard plastic floor protection in load area

ACCESS

Safety and security

- ESC with Hill Start Assist, ABS braking including EBA and EBFD
- Automatic activation of hazard lights on major deceleration
- Remote central locking with deadlocks and separate locking for cab
- Full steel bulkhead
- Driver and passenger airbag
- Electric front windows (One touch)
- Electrically adjustable and heated door mirrors

Seating

- Driver's seat with rake and reach adjustment
- Individual passenger seat with under seat storage

Comfort & Convenience

- Full size steel spare wheel
- PEUGEOT i-Cockpit® with head-up display and compact steering wheel

Lighting and Visibility

- Daytime Running Lights

Technology & Entertainment

- Radio with Bluetooth®, USB

Exterior Features

- 15" Steel wheels (650kg L1 models)
- 16" Steel wheels (1000kg and L2 models)
- Unglazed asymmetric rear doors, opening to 180 degrees
- Twin sliding side doors (L2 models only)

Interior Features

- 12 volt socket in dashboard
- 6 tie-down hooks in load area
- Overhead storage shelf

In addition to the 'Active' trim, there is a 'Grip' trim which is ideal for work areas such as construction and farming

GRIP

Safety and security

- Grip Control® with Hill Descent Control
- Underbody protection

Seating

- Passenger bench seat with pivoting writing table

Comfort & Convenience

- Air conditioning

Lighting and Visibility

- Front fog lights with cornering function

Technology & Entertainment

- 220v socket in loading area

Exterior Features

- 16 inch steel wheels with Michelin Latitude Tour Mud & Snow tyres
- Increased ground clearance (+30mm)

Interior Features

- LED reinforced lighting to load area
- 4 mid-height load securing rings
- Hard plastic floor protection in cabin area

**Does not include hard plastic flooring in the loading area*



NEW PEUGEOT PARTNER: L1 PRICELIST

| Trim | Length | Model Description | RRSP* | CO2 g/km** | VRT Band | Annual Road Tax | Fuel Type | Transmission |
|-------------------|--------|------------------------------------|---------|------------|----------|-----------------|-----------|--------------|
| Access | L1 | 1.5 BlueHDi 75BHP 650kg | €16,935 | 113 | Comm | €333 | Diesel | 5-Speed |
| | | 1.5 BlueHDi 75BHP 1000kg | €17,235 | 113 | Comm | €333 | Diesel | 5-Speed |
| | | 1.5 BlueHDi 100BHP 1000KG S&S | €18,055 | 108 | Comm | €333 | Diesel | 5-Speed |
| | | 1.5 BlueHDi 130BHP 1000KG S&S | €19,500 | 117 | Comm | €333 | Diesel | 6-Speed |
| | | 1.5 BlueHDi 130BHP 1000kg Auto S&S | €21,800 | 114 | Comm | €333 | Diesel | 8-Speed |
| Active | | 1.5 BlueHDi 75BHP 650kg | €17,935 | 113 | Comm | €333 | Diesel | 5-Speed |
| | | 1.5 BlueHDi 75BHP 1000kg | €18,235 | 113 | Comm | €333 | Diesel | 5-Speed |
| | | 1.5 BlueHDi 100BHP 1000kg S&S | €19,055 | 108 | Comm | €333 | Diesel | 5-Speed |
| | | 1.5 BlueHDi 130BHP 1000kg | €20,500 | 117 | Comm | €333 | Diesel | 6-Speed |
| | | 1.5 BlueHDi 130BHP 1000kg Auto | €22,800 | 114 | Comm | €333 | Diesel | 8-Speed |
| Active Plus | | 1.5 BlueHDi 75BHP 650kg | €18,810 | 113 | Comm | €333 | Diesel | 5-Speed |
| | | 1.5 BlueHDi 75BHP 1000kg | €19,110 | 113 | Comm | €333 | Diesel | 5-Speed |
| | | 1.5 BlueHDi 100BHP 1000kg S&S | €19,930 | 108 | Comm | €333 | Diesel | 5-Speed |
| | | 1.5 BlueHDi 130BHP 1000kg S&S | €21,375 | 117 | Comm | €333 | Diesel | 6-Speed |
| | | 1.5 BlueHDi 130BHP 1000kg Auto S&S | €23,675 | 114 | Comm | €333 | Diesel | 8-Speed |
| Professional | | 1.5 BlueHDi 75BHP 650kg | €19,810 | 113 | Comm | €333 | Diesel | 5-Speed |
| | | 1.5 BlueHDi 75BHP 1000kg | €20,110 | 113 | Comm | €333 | Diesel | 5-Speed |
| Professional Plus | | 1.5 BlueHDi 100BHP 1000kg S&S | €20,815 | 108 | Comm | €333 | Diesel | 5-Speed |
| | | 1.5 BlueHDi 130BHP 1000kg S&S | €22,260 | 117 | Comm | €333 | Diesel | 6-Speed |
| | | 1.5 BlueHDi 130BHP 1000kg Auto S&S | €24,560 | 114 | Comm | €333 | Diesel | 8-Speed |
| Grip | | 1.5 BlueHDi 75BHP 1000kg | €20,415 | 116 | Comm | €333 | Diesel | 5-Speed |
| | | 1.5 BlueHDi 100BHP 1000kg S&S | €21,235 | 111 | Comm | €333 | Diesel | 5-Speed |
| | | 1.5 BlueHDi 130BHP 1000kg S&S | €22,680 | 119 | Comm | €333 | Diesel | 6-Speed |
| | | 1.5 BlueHDi 130BHP 1000kg Auto S&S | €24,980 | 117 | Comm | €333 | Diesel | 8-Speed |

*Dealer delivery related charges, metallic paint and tyre recycling charges not included

NEW PEUGEOT PARTNER: L2 PRICELIST

| Trim | Length | Model Description | RRSP* | CO2 g/km** | VRT Band | Annual Road Tax | Fuel Type | Transmission |
|-------------------|--------|------------------------------------|---------|------------|----------|-----------------|-----------|--------------|
| Access | L2 | 1.5 BlueHDi 100BHP 1000kg S&S | €19,215 | 108 | Comm | €333 | Diesel | 5-Speed |
| | | 1.5 BlueHDi 130BHP 1000kg S&S | €20,660 | 118 | Comm | €333 | Diesel | 6-Speed |
| | | 1.5 BlueHDi 130BHP 1000kg Auto S&S | €22,960 | 114 | Comm | €333 | Diesel | 8-Speed |
| Active | | 1.5 BlueHDi 100BHP 1000kg S&S | €20,215 | 108 | Comm | €333 | Diesel | 5-Speed |
| | | 1.5 BlueHDi 130BHP 1000kg S&S | €21,660 | 118 | Comm | €333 | Diesel | 6-Speed |
| | | 1.5 BlueHDi 130BHP 1000kg Auto S&S | €23,960 | 114 | Comm | €333 | Diesel | 8-Speed |
| Active Plus | | 1.5 BlueHDi 100BHP 1000kg S&S | €21,090 | 108 | Comm | €333 | Diesel | 5-Speed |
| | | 1.5 BlueHDi 130BHP 1000kg S&S | €22,535 | 118 | Comm | €333 | Diesel | 6-Speed |
| | | 1.5 BlueHDi 130BHP 1000kg Auto S&S | €24,835 | 114 | Comm | €333 | Diesel | 8-Speed |
| Professional Plus | | 1.5 BlueHDi 100BHP 1000kg S&S | €21,975 | 108 | Comm | €333 | Diesel | 5-Speed |
| | | 1.5 BlueHDi 130BHP 1000kg S&S | €23,420 | 118 | Comm | €333 | Diesel | 6-Speed |
| | | 1.5 BlueHDi 130BHP 1000kg Auto S&S | €25,720 | 114 | Comm | €333 | Diesel | 8-Speed |
| Grip | | 1.5 BlueHDi 100BHP 1000kg S&S | €22,395 | 111 | Comm | €333 | Diesel | 5-Speed |
| | | 1.5 BlueHDi 130BHP 1000kg S&S | €23,840 | 120 | Comm | €333 | Diesel | 6-Speed |
| | | 1.5 BlueHDi 130BHP 1000kg Auto S&S | €26,140 | 120 | Comm | €333 | Diesel | 8-Speed |

*Dealer delivery related charges, metallic paint and tyre recycling levy not included



NEW PEUGEOT PARTNER: OPTIONS PRICE LIST

| | CODE | ACCESS | ACTIVE | ACTIVE PLUS | PROFESSIONAL | PROFESSIONAL PLUS | GRIP | RRSP |
|--|------|--------|--------|-------------|--------------|-------------------|------|-------|
| TECHNOLOGY & ENTERTAINMENT | | | | | | | | |
| 8" Capacitive colour touchscreen offering Apple CarPlay™, Android Auto & Mirrorlink® with steering mounted controls, 2 USB ports | WLO1 | ○ | ○ | ○ | ● | ● | ○ | €330 |
| 8" Navigation capacitive colour touchscreen offering Apple CarPlay™, Android Auto & Mirrorlink® with steering mounted controls, 2 USB ports | WL2J | ○ | ○ | ○ | - | - | ○ | €825 |
| 8" Navigation capacitive colour touchscreen offering Apple CarPlay™, Android Auto & Mirrorlink® with steering mounted controls, 2 USB ports | WL2J | - | - | - | ○ | ○ | - | €495 |
| Wireless charging | ES01 | ○ | ○ | ○ | ○ | ○ | ○ | €165 |
| COMFORT & CONVENIENCE | | | | | | | | |
| Electric folding door mirrors | HU02 | ○ | ○ | ○ | ○ | ○ | ○ | €130 |
| Rear parking sensors | UB01 | ○ | ○ | ○ | ● | ● | ○ | €330 |
| Rear and front parking sensors | UB03 | ○ | ○ | - | - | - | - | €775 |
| Rear and front parking sensors | UB03 | - | - | ○ | ○ | - | ○ | €495 |
| Rear parking sensors and visio park 180 (Visible on a central 5" screen in location of rear view mirror) | UB09 | ○ | ○ | ○ | ○ | - | ○ | €550 |
| Rear and front parking sensors and visio park 180 Visible on a central 5" screen in location of rear view mirror) | UB07 | ○ | ○ | - | - | - | - | €975 |
| Rear and front parking sensors and visio park 180 (Visible on a central 5" screen in location of rear view mirror) | UB07 | - | - | ○ | ○ | - | ○ | €695 |
| Rear and front parking sensors and visio park 180 (Visible on a central 5" screen in location of rear view mirror) + Blind spot detection (BSD) | J5BY | - | - | ○ | ○ | - | ○ | €860 |
| Dynamic rear vision, Visiopark 180 and side vision camera. (Visible on a central 5" screen in location of rear view mirror) | N201 | ○ | ○ | - | - | ● | - | €1355 |
| Dynamic rear vision, Visiopark 180 and side vision camera. (Visible on a central 5" screen in location of rear view mirror) | N201 | - | - | ○ | ○ | ● | ○ | €1075 |
| Dynamic rear vision, Visiopark 180 and side vision camera. (Visible on a central 5" screen in location of rear view mirror) + Blind spot detection (BSD) | J5CA | ○ | ○ | - | - | ● | - | €1520 |
| Dynamic rear vision, Visiopark 180 and side vision camera. (Visible on a central 5" screen in location of rear view mirror)+ Blind spot detection (BSD) | J5CA | - | - | ○ | ○ | ● | ○ | €1240 |
| Dynamic rear vision, Visiopark 180 and side vision camera. (Visible on a central 5" screen in location of rear view mirror)+ Blind spot detection (BSD) | J5CA | - | - | - | - | - | - | €165 |
| Cruise control with variable speed limiter | ZU77 | ○ | ● | ● | ● | ● | ● | €130 |
| Keyless Access and Start | YD01 | - | - | ○ | ○ | - | ○ | €345 |
| Keyless Access and Start | YD01 | - | - | - | - | ○ | - | €245 |
| Air conditioning | RE01 | ○ | ○ | ● | ● | ● | ● | €790 |
| Dual zone climatronic airconditioning | RE07 | - | - | ○ | ○ | - | ○ | €395 |
| Dual zone climatronic airconditioning | RE07 | - | - | - | - | ○ | - | €265 |

○ = Optional. ● = Standard. - = Not available.

NEW PEUGEOT PARTNER: OPTIONS PRICE LIST

| | CODE | ACCESS | ACTIVE | ACTIVE PLUS | PROFESSIONAL | PROFESSIONAL PLUS | GRIP | RRSP |
|--|------|--------|--------|-------------|--------------|-------------------|------|------|
| SAFETY & SECURITY | | | | | | | | |
| Underbody protection | FX01 | ○ | ○ | ○ | ○ | ○ | ● | €85 |
| Worksite Pack: Grip Control® with Hill Descent Control, Michelin Latitude Tour Mud and Snow tyres, increased ground clearance and underbody protection plate (650kg models) | GA03 | ○ | ○ | ○ | ○ | - | ● | €460 |
| Worksite Pack: Grip Control® with Hill Descent Control, Michelin Latitude Tour Mud and Snow tyres, increased ground clearance and underbody protection plate (950kg + 1000kg models) | GA03 | ○ | ○ | ○ | ○ | - | ● | €380 |
| Automatic electronic parking brake | FH05 | ○ | ● | ● | ● | ● | ● | €85 |
| Indirect Tire pressure monitoring system (iTMS) | UE05 | ○ | ○ | ○ | ○ | ○ | ○ | €85 |
| Overload indicator | L901 | ○ | ○ | ○ | ○ | ○ | ○ | €130 |
| Glazed bulkhead | PX35 | ○ | ○ | ○ | ○ | ○ | - | €50 |
| Side airbag | NF11 | ○ | ○ | ○ | ○ | ○ | ○ | €165 |
| Side airbag + curtain airbag | NF12 | ○ | ○ | ○ | ○ | ○ | ○ | €380 |
| Alarm | AB13 | ○ | ○ | ○ | ○ | ○ | ○ | €250 |
| Safety pack - active lane keeping assist, speed limit recognition and recommendation, active safety brake | ZV78 | ○ | ○ | ○ | ○ | ○ | ○ | €415 |
| Safety plus pack - Safety pack + high beam assist + extended traffic sign recognition + advanced driver attention alert | ZV79 | - | - | ○ | ○ | - | - | €710 |
| Safety plus pack - Safety pack + high beam assist + extended traffic sign recognition + advanced driver attention alert | ZV79 | - | - | - | - | ○ | ○ | €580 |
| Drive assist pack - Safety plus pack + ACC 30 manual / ACC Stop auto (1000kg 1.5 Blue HDi 130BHP Manual & Auto engines only) | ZV80 | - | - | ○ | ○ | ○ | ○ | €840 |
| LIGHTING & VISIBILITY | | | | | | | | |
| Front fog lights with cornering function | PR03 | ○ | ○ | ● | ● | ● | ● | €280 |
| Visibility Pack : Automatic Front flat blade wiper with magic wash system and turn on headlamp (includes steering wheel with integrated command) | NB08 | ○ | ○ | - | ● | ● | - | €415 |
| Visibility Pack : Automatic Front flat blade wiper with magic wash system and turn on headlamp (includes steering wheel with integrated command) | NB08 | - | - | ○ | ● | ● | ○ | €130 |
| DOORS & WINDOWS | | | | | | | | |
| Side sliding door | PC18 | ○ | ● | ● | ● | ● | ● | €330 |
| Side sliding door with fixed window (option not available for L2) | VG13 | ○ | - | - | - | - | - | €430 |
| Side sliding door with fixed window (option not available for L2) | VG13 | - | ○ | ○ | ○ | ○ | ○ | €100 |
| Twin sliding doors (Standard on L2) | PC19 | ○ | - | - | - | - | - | €660 |
| Twin sliding doors (Standard on L2) | PC19 | - | ○ | ○ | ○ | ○ | ○ | €330 |
| Twin sliding doors with fixed windows (L1) | J5BT | ○ | - | - | - | - | - | €860 |
| Twin sliding doors with fixed windows (L1) | J5BT | - | ○ | ○ | ○ | ○ | ○ | €530 |
| Twin sliding doors with fixed windows (L2) | J5BT | ○ | ○ | ○ | ○ | ○ | ○ | €200 |
| Glazed asymmetric rear doors, opening to 180 degrees, heated glass and wiper on left hand side | PB04 | ○ | ○ | ○ | ○ | ○ | ○ | €130 |

○ = Optional. ● = Standard. - = Not available.

NEW PEUGEOT PARTNER: OPTIONS PRICE LIST

| | CODE | ACCESS | ACTIVE | ACTIVE PLUS | PROFESSIONAL | PROFESSIONAL PLUS | GRIP | RRSP |
|--|------|--------|--------|-------------|--------------|-------------------|------|------|
| SEATING | | | | | | | | |
| Passenger bench seat with pivoting writing table | ME08 | - | ○ | ○ | ○ | ○ | ● | €85 |
| INTERIOR FEATURES, STORAGE & LOAD CARRYING | | | | | | | | |
| Hard plastic floor protection in cabin area | LK11 | ○ | ○ | ● | ● | ● | ● | €50 |
| Hard plastic floor protection in load area | GB23 | ○ | ● | ● | ● | ● | ○ | €85 |
| 230V plug | ES11 | ○ | ○ | ○ | ○ | ○ | - | €50 |
| Loading area pack - 12v plug, reinforced LED lighting and 4 mid height lashing points | ES03 | ○ | ○ | ○ | ○ | ○ | ● | €85 |
| WHEELS, TYRES & EXTERIOR FEATURES | | | | | | | | |
| 15" steel wheels with 'Milford' wheel cover (650kg versions) | DZJM | ○ | ○ | ○ | ● | ● | - | €50 |
| 16" steel wheels with 'Rakiura' wheel cover (950kg and 1000kg versions) | DZJN | - | - | ○ | ● | ● | - | €50 |
| 16" Taranaki alloy wheels (650kg versions) | DZSB | - | - | ○ | ○ | ○ | - | €580 |
| 16" Taranaki alloy wheels (1000kg versions) | DZSB | - | - | ○ | ○ | ○ | - | €495 |
| Look pack: Body coloured rear bumper, side rubbing strips, exterior door handles and mirrors | ED17 | - | - | ○ | ○ | ○ | - | €415 |
| Metallic paint | ..M0 | ○ | ○ | ○ | ○ | ○ | ○ | €495 |
| Black paint | ..P0 | ○ | ○ | ○ | ○ | ○ | ○ | €250 |
| TOWING | | | | | | | | |
| Tow bar with standard tow ball, 13 pin connector and trailer stability control | AQ03 | ○ | ○ | ○ | ○ | ○ | ○ | €825 |
| Tow bar with mixed hook, 13 pin connector and trailer stability control | AQ10 | ○ | ○ | ○ | ○ | ○ | ○ | €990 |

○ = Optional. ● = Standard. - = Not available.



NEW PEUGEOT PARTNER: RANGE EQUIPMENT

| | ACCESS | ACTIVE | ACTIVE PLUS | PROFESSIONAL | PROFESSIONAL PLUS | | GRIP |
|--|--------|--------|-------------|--------------|-------------------|--|------|
| TECHNOLOGY & ENTERTAINMENT | | | | | | | |
| 8" Capacitive colour touchscreen with Connect DAB radio, MirrorScreen®, Bluetooth® handsfree, USB socket | ○ | ○ | ○ | ● | ● | | ○ |
| COMFORT & CONVENIENCE | | | | | | | |
| Air conditioning | ○ | ○ | ● | ● | ● | | ● |
| Electric power assisted steering with height and reach adjustable steering wheel | ● | ● | ● | ● | ● | | ● |
| Electric front windows with one-touch operation | ● | ● | ● | ● | ● | | ● |
| Rear parking sensors | ○ | ○ | ○ | ● | ● | | ○ |
| Dynamic rear vision, Visiopark 180 and side vision camera. Visible on a central 5" screen in place of a rear view mirror | ○ | ○ | ○ | ○ | ● | | ○ |
| SAFETY & SECURITY | | | | | | | |
| Remote central locking with deadlocking. Selective cab and load area locking via 3-button plip remote control key | ● | ● | ● | ● | ● | | ● |
| Dashboard mounted central locking push button and auto locking above 12kph | ● | ● | ● | ● | ● | | ● |
| Manual parking brake | ● | - | - | - | - | | - |
| Automatic electronic parking brake | ○ | ● | ● | ● | ● | | ● |
| Electronic Stability Control and ABS with Hill Start Assist, EBA and EBF | ● | ● | ● | ● | ● | | ● |
| Automatic activation of hazard warning lights on major deceleration | ● | ● | ● | ● | ● | | ● |
| Driver's and passengers airbag | ● | ● | ● | ● | ● | | ● |
| Visible VIN at base of windscreen | ● | ● | ● | ● | ● | | ● |
| Lockable fuel cap | ● | ● | ● | ● | ● | | ● |
| Cruise control with programmable speed limiter | ○ | ● | ● | ● | ● | | ● |
| LIGHTING & VISIBILITY | | | | | | | |
| Two-speed and intermittent front wipers | ● | ● | ● | ● | ● | | ● |
| Visibility Pack: Automatic windscreen wipers, Magic Wash® and integrated steering wheel controls | ○ | ○ | ○ | ● | ● | | ○ |
| Height adjustable halogen headlights with automatic illumination and integrated daytime running lights (DRLs) | ● | ● | ● | ● | ● | | ● |
| Front fog lights | ○ | ○ | ● | ● | ● | | ● |
| High level third brake light | ● | ● | ● | ● | ● | | ● |
| Electrically adjustable and heated door mirrors | ● | ● | ● | ● | ● | | ● |
| Manually folding door mirrors | ● | ● | ● | ● | ● | | ● |
| DOORS & WINDOWS | | | | | | | |
| Nearside side sliding door | ○ | ● | ● | ● | ● | | ● |
| Twin sliding side doors (standard on L2 versions only) | ○ ● | ○ ● | ○ ● | ○ ● | ○ ● | | ○ ● |
| Unglazed asymmetric rear doors, opening to 180 degrees | ● | ● | ● | ● | ● | | ● |

○ = Optional. ● = Standard. - = Not available.

NEW PEUGEOT PARTNER: RANGE EQUIPMENT

| | ACCESS | ACTIVE | ACTIVE PLUS | PROFESSIONAL | PROFESSIONAL PLUS | | GRIP |
|---|--------|--------|-------------|--------------|-------------------|--|------|
| SEATING | | | | | | | |
| Driver's seat with rake and reach adjustment | ● | - | - | - | - | | - |
| Individual passenger seat with under seat storage | ● | - | - | - | - | | - |
| Comfort driver's seat with height, lumbar, rake and reach adjustment | - | ● | ● | ● | ● | | ● |
| Multi-Flex modular folding passenger bench seat storage under central seat, load through hatch in bulkhead and load protection cover compliant with ISO27956 | - | ● | ● | ● | ● | | - |
| Multi-Flex modular folding passenger bench seat with pivoting writing table, storage under central seat, load through hatch in bulkhead and load protection cover compliant with ISO27956 | - | ○ | ○ | ○ | ○ | | ● |
| INTERIOR DFEATURES, STORAGE AND LOADING CARRYING | | | | | | | |
| Overhead storage shelf in cabin | ● | ● | ● | ● | ● | | ● |
| Front door pockets with 1.5l bottle holders | ● | ● | ● | ● | ● | | ● |
| Cup holders for driver and passenger on either side of the dashboard | ● | ● | ● | ● | ● | | ● |
| Upper glove box storage compartment. Large enough to accommodate a 15" laptop or A4 format files | ● | ● | ● | ● | ● | | ● |
| 12 volt socket in dashboard | ● | ● | ● | ● | ● | | ● |
| Hard plastic floor protection in cabin | ○ | ○ | ● | ● | ● | | ○ |
| Full steel bulkhead | ● | - | - | - | - | | - |
| Full steel bulkhead with moduwork(load through area to cabin) | - | ● | ● | ● | ● | | ● |
| 6 floor-mounted load securing rings | ● | ● | ● | ● | ● | | ● |
| Hard plastic floor protection in load area | ○ | ● | ● | ● | ● | | ○ |
| Loading Pack: Enhanced LED lighting and 12v socket in the load area. 4 mid-height load securing rings and 220v socket | ○ | ○ | ○ | ○ | ○ | | ● |
| WHEELS, TYRES & EXTERIOR STYLE | | | | | | | |
| 15 inch steel wheels with black centre cap (650kg versions) | ● | ● | ● | - | - | | - |
| 16 inch steel wheels with black centre cap (950kg and 1000kg versions) | ● | ● | ● | - | - | | - |
| 16 inch steel wheels with Michelin Latitude Tour Mud & Snow tyres | - | - | - | - | - | | ● |
| 15 inch steel wheels with 'Milford' wheel cover (650kg versions) | - | - | - | ● | - | | - |
| 16 inch steel wheels with 'Rakiura' wheel cover (950kg and 1000kg versions) | - | - | - | ● | ● | | - |
| Full size steel spare wheel | ● | ● | ● | ● | ● | | ● |
| INSTRUMENTS | | | | | | | |
| Rev counter with maintenance and gear efficiency (GEI) indicators | ● | ● | ● | ● | ● | | ● |
| Multi-function on-board trip computer | ● | ● | ● | ● | ● | | ● |
| Driver seatbelt unfastened warning | ● | ● | ● | ● | ● | | ● |
| Door opening warning and audible lights-on warning | ● | ● | ● | ● | ● | | ● |

NEW PEUGEOT PARTNER: PAINT OPTIONS

| Flat Colours | | Metallic Colours | | | | |
|--------------|-------|------------------|-------------|-----------|------------|---------------|
| Bianca White | Black | Cumulus Grey | Nimbus Grey | Deep Blue | Pearl Sand | Sunset Copper |
| POWP | POXY | MOF4 | MOVL | MOJG | MOEU | MOLG |
| ● | ○ | ○ | ○ | ○ | ○ | ○ |

○ = Optional. ● = Standard. - = Not available.



BIANCA WHITE



BLACK



CUMULUS GREY



NIMBUS GREY



DEEP BLUE



PEARL SAND



SUNSET COPPER

NEW PEUGEOT PARTNER: WHEEL OPTIONS



15 / 16 inch steel wheel
with black centre cap

15" S Access - Active Plus (650kg versions)
16" S Active - Active Plus (950kg + 1000kg versions)



15 inch 'Milford'
wheel covers

S Professional + Professional Plus
(650kg versions)



16 inch 'Rakiura'
wheel covers

S Professional + Professional Plus
(950kg + 1000kg versions)



16 inch 'Taranaki'
alloy wheels

Optional

NEW PEUGEOT PARTNER: UPHOLSTERY OPTIONS



Curitiba Grey (OAFY)

NEW PEUGEOT PARTNER: TECHNICAL SPECIFICATION

| | 1.5 BlueHDi 75BHP | | | | | 1.5 BlueHDi 100BHP S&S | | | | | |
|--|---|------------------|----------------------------------|------------------------------------|----------------|------------------------|---|----------------|------------------|---|----------------|
| | L1 | | | | | L1 | | | L2 | | |
| | Access 650KG | Access 1000KG | Active - Profesional 650KG | Active - Professional 1000KG | Grip 1000KG | Access 1000KG | Active - Professional Plus 1000kg | Grip 1000kg | Access 1000kg | Active - Professional Plus 1000kg | Grip 1000kg |
| ENGINE | | | | | | | | | | | |
| Capacity (cc) | 1499 | | | | | | | | | | |
| Cylinders / Valves | 4/16 | | | | | | | | | | |
| Max power CEE (kW (hp)/rpm) | 56(76)/3500 | | | | | 75(102)/3500 | | | | | |
| Max torque CEE (Nm (lb/ft)/rpm) | 230(170)/1750 | | | | | 250(184)/3750 | | | | | |
| Bore and stroke (mm) | 75 x 84.8 | | | | | | | | | | |
| Fuel system | Diesel - High pressure turbo-charged direct injection | | | | | | | | | | |
| Euro status | Euro 6.2 | | | | | | | | | | |
| Stop & Start system | - | | | | | | | | | | |
| TRANSMISSION | | | | | | | | | | | |
| Gearbox | Manual | | | | | | | | | | |
| Number of gears | 5 | | | | | | | | | | |
| Driven wheels | Front | | | | | | | | | | |
| PERFORMANCE (All figures driver alone) | | | | | | | | | | | |
| Max speed (kph) | 152 | 151 | 151 | 151 | 148 | 170 | 170 | 168 | 170 | 170 | 168 |
| 0-100kph (secs) | 17.9 | 19.8 | 18.1 | 20 | 20.4 | 11.5 | 11.5 | 11.7 | 11.5 | 11.5 | 11.7 |
| ECONOMY (Litres/100km) | | | | | | | | | | | |
| Urban cycle | 4.8 | 4.9 | 4.8 | 4.9 | 5.0 | 4.4 | 4.4 | 4.5 | 4.4 | 4.4 | 4.5 |
| Extra urban | 4.0 | 4.0 | 4.0 | 4.0 | 4.1 | 3.9 | 3.9 | 4.1 | 3.9 | 3.9 | 4.1 |
| Combined | 4.3 | 4.3 | 4.3 | 4.3 | 4.4 | 4.1 | 4.1 | 4.2 | 4.1 | 4.1 | 4.2 |
| CO2 EMISSIONS (g/km) | 113 | 113 | 113 | 113 | 116 | 108 | 108 | 111 | 108 | 108 | 111 |
| WEIGHTS (kg) with 3 seats / 2 seats | | | | | | | | | | | |
| Gross Vehicle Weight (GVW) | 1980 | 2340 | 1980 | 2340 | 2340 | 2345 | 2345 | 2345 | 2355 | 2355 | 2355 |
| Kerb weight (1) | 1320 | 1340 | 1320 | 1340 | 1355 | 1347 | 1347 | 1361 | 1402 | 1402 | 1417 |
| Mass in service | 1395 | 1415 | 1395 | 1415 | 1430 | 1422 | 1422 | 1436 | 1477 | 1477 | 1588 |
| Maximum Indicative Payload (2) | 660 | 1021 | 660 | 1021 | 985 | 998 | 998 | 984 | 953 | 953 | 938 |
| Max plated front axle (3) | TBC | TBC | TBC | TBC | TBC | TBC | TBC | TBC | TBC | TBC | TBC |
| Max plated rear axle (3) | TBC | TBC | TBC | TBC | TBC | TBC | TBC | TBC | TBC | TBC | TBC |
| Gross Train Weight (GTW) | 3080 | 3190 | 3080 | 3190 | 3190 | 3345 | 3345 | 3345 | 3355 | 3355 | 3355 |
| Maximum braked towing weight (4) | TBC | TBC | TBC | TBC | TBC | TBC | TBC | TBC | TBC | TBC | TBC |
| Maximum unbraked towing weight | TBC | TBC | TBC | TBC | TBC | TBC | TBC | TBC | TBC | TBC | TBC |
| Maximum towball weight | 74 | | | | | | | | | | |
| BRAKES Front/Rear | 283mm Ventilated front discs / 268mm Solid rear discs | | | | | | | | | | |
| TURNING CIRCLE between kerbs (m) | 10.82 | 10.82 | 10.82 | 10.82 | 10.82 | 10.82 | 10.82 | 10.82 | 11.43 | 11.43 | 11.43 |
| FUEL TANK CAPACITY Litres | 50 | | | | | | | | | | |
| ADBLUE TANK CAPACITY Litres | 17 | | | | | | | | | | |

(1) Without driver. Kerb weight is calculated for a European base specification vehicle including oil, water, lubricants, tools, spare wheel and 90% full fuel tank. Weights may change with the addition of equipment.

(2) Maximum indicative payload is calculated as the difference between GVW and kerb weight. However, due to manufacturing tolerances and differences in the specification of UK vehicles, the mass in service figure provides a closer indication of the vehicle weight and therefore enables a more realistic payload to be calculated. An individual vehicle must be weighed to establish the exact kerb weight and payload applicable to that vehicle. It is the responsibility of the driver to ensure the vehicle is operated within the legal limits

(3) Within limits of GVW.

(4) Maximum recommended towing weight within limits of GTW.

NEW PEUGEOT PARTNER: TECHNICAL SPECIFICATION

| | 1.5 BlueHDi 130BHP S&S | | | | | | 1.5 BlueHDi 130BHP AUTO S&S | | | | | |
|---|---|---|----------------|------------------|---|----------------|-----------------------------|---|----------------|------------------|---|----------------|
| | L1 | | | L2 | | | L1 | | | L2 | | |
| | Access 1000KG | Active - Professional Plus 1000kg | Grip 1000kg | Access 1000kg | Active - Professional Plus 1000kg | Grip 1000kg | Access 1000KG | Active - Professional Plus 1000kg | Grip 1000kg | Access 1000kg | Active - Professional Plus 1000kg | Grip 1000kg |
| ENGINE | | | | | | | | | | | | |
| Capacity (cc) | 1499 | | | | | | | | | | | |
| Cylinders / Valves | 4/16 | | | | | | | | | | | |
| Max power CEE (kW (hp)/rpm) | 96(131)/3750 | | | | | | | | | | | |
| Max torque CEE (Nm (lb/ft)/rpm) | 300(221)/1750 | | | | | | | | | | | |
| Bore and stroke (mm) | 75 x 84.8 | | | | | | | | | | | |
| Fuel system | Diesel - High pressure turbo-charged direct injection | | | | | | | | | | | |
| Euro status | Euro 6.2 | | | | | | | | | | | |
| Stop & Start system | ● | | | | | | | | | | | |
| TRANSMISSION | | | | | | | | | | | | |
| Gearbox | Manual | | | | | | Automatic | | | | | |
| Number of gears | 6 | | | | | | 8 | | | | | |
| Driven wheels | Front | | | | | | | | | | | |
| PERFORMANCE (All figures driver alone) | | | | | | | | | | | | |
| Max speed (kph) | 183 | 183 | 181 | 183 | 183 | 181 | 181 | 181 | 177 | 181 | 181 | 177 |
| 0-100kph (secs) | 12.2 | 12.2 | 12.3 | 12.2 | 12.2 | 12.4 | 13 | 13 | 12.8 | 13.1 | 13.1 | 12.9 |
| ECONOMY (Litres/100km) | | | | | | | | | | | | |
| Urban cycle | 5.1 | 5.1 | 5.1 | 5.1 | 5.1 | 5.1 | 4.6 | 4.6 | 4.7 | 4.6 | 4.6 | 4.8 |
| Extra urban | 4.0 | 4.0 | 4.2 | 4.1 | 4.1 | 4.2 | 4.1 | 4.1 | 4.3 | 4.2 | 4.2 | 4.4 |
| Combined | 4.4 | 4.4 | 4.5 | 4.5 | 4.5 | 4.5 | 4.3 | 4.3 | 4.4 | 4.3 | 4.3 | 4.6 |
| CO2 EMISSIONS (g/km) | 117 | 117 | 119 | 118 | 118 | 120 | 114 | 114 | 117 | 114 | 114 | 120 |
| WEIGHTS (kg) with 3 seats / 2 seats | | | | | | | | | | | | |
| Gross Vehicle Weight (GVW) | 2370 | 2370 | 2370 | 2380 | 2380 | 2380 | 2380 | 2380 | 2380 | 2370 | 2370 | 2370 |
| Kerb weight (1) | 1368 | 1368 | 1383 | 1422 | 1422 | 1430 | 1380 | 1380 | 1395 | 1430 | 1430 | 1451 |
| Mass in service | 1443 | 1443 | 1458 | 1497 | 1497 | 1505 | 1455 | 1455 | 1470 | 1505 | 1505 | 1526 |
| Maximum Indicative Payload (2) | 1002 | 1002 | 987 | 958 | 958 | 950 | 1000 | 1000 | 985 | 940 | 940 | 919 |
| Max plated front axle (3) | TBC | TBC | TBC | TBC | TBC | TBC | TBC | TBC | TBC | TBC | TBC | TBC |
| Max plated rear axle (3) | TBC | TBC | TBC | TBC | TBC | TBC | TBC | TBC | TBC | TBC | TBC | TBC |
| Gross Train Weight (GTW) | 3570 | 3570 | 3570 | 3580 | 3580 | 3580 | 3380 | 3380 | 3380 | 3370 | 3370 | 3370 |
| Maximum braked towing weight (4) | TBC | TBC | TBC | TBC | TBC | TBC | TBC | TBC | TBC | TBC | TBC | TBC |
| Maximum unbraked towing weight | TBC | TBC | TBC | TBC | TBC | TBC | TBC | TBC | TBC | TBC | TBC | tBC |
| Maximum towball weight | 74 | | | | | | | | | | | |
| BRAKES Front/Rear | | | | | | | | | | | | |
| 283mm Ventilated front discs / 268mm Solid rear discs | | | | | | | | | | | | |
| TURNING CIRCLE between kerbs (m) | 10.82 | 10.82 | 10.82 | 11.43 | 11.43 | 11.43 | 10.82 | 10.82 | 10.82 | 11.43 | 11.43 | 11.43 |
| FUEL TANK CAPACITY Litres | 50 | | | | | | | | | | | |
| ADBLUE TANK CAPACITY Litres | 17 | | | | | | | | | | | |

(1) Without driver. Kerb weight is calculated for a European base specification vehicle including oil, water, lubricants, tools, spare wheel and 90% full fuel tank. Weights may change with the addition of equipment.

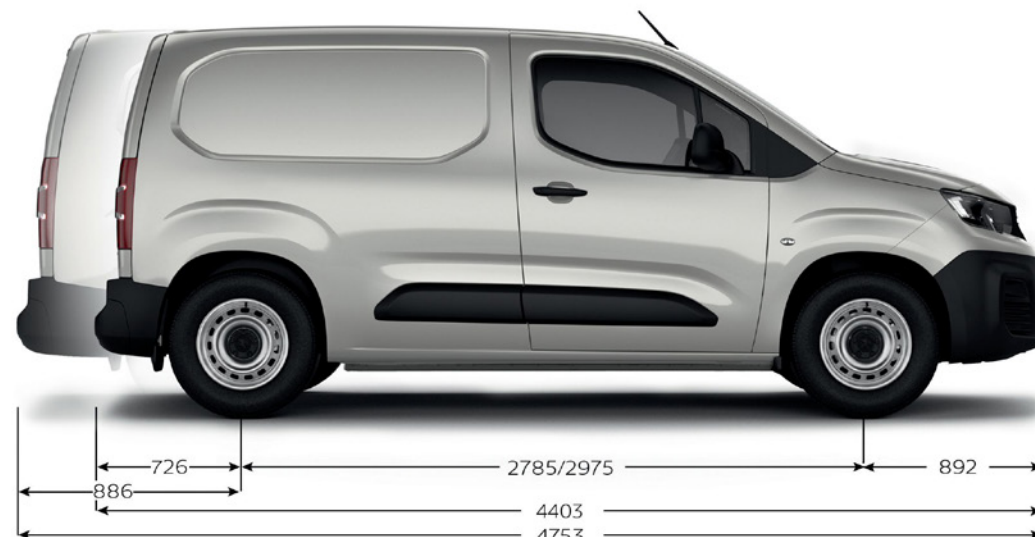
(2) Maximum indicative payload is calculated as the difference between GVW and kerb weight. However, due to manufacturing tolerances and differences in the specification of UK vehicles, the mass in service figure provides a closer indication of the vehicle weight and therefore enables a more realistic payload to be calculated. An individual vehicle must be weighed to establish the exact kerb weight and payload applicable to that vehicle. It is the responsibility of the driver to ensure the vehicle is operated within the legal limits

(3) Within limits of GVW.

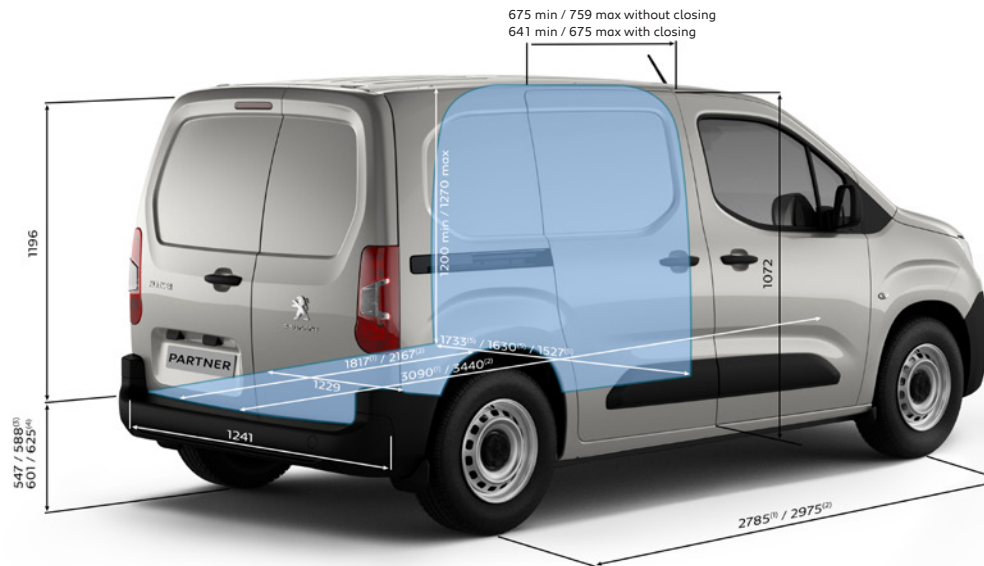
(4) Maximum recommended towing weight within limits of GTW.

NEW PEUGEOT PARTNER: DIMENSIONS

| VERSIONS | STANDARD | LONG |
|---|-------------|-------------|
| EXTERNAL DIMENSIONS (mm) | | |
| Wheelbase | 2785 | 2975 |
| Overall length | 4403 | 4753 |
| Overall height (Grip versions) | 1840 (1860) | 1849 (1860) |
| Width (excluding door mirrors) | 1848 | |
| Width (including door mirrors) | 2107 | |
| Front overhang | 892 | |
| Rear overhang | 726 | 886 |
| INTERIOR DIMENSIONS (mm) | | |
| Load length at floor (without Multi-Flex seat folded if applicable) | 1817 | 2167 |
| Load length at floor (with Multi-Flex seat folded if applicable) | 3090 | 3440 |
| Load width between wheel arches | 1229 | |
| Maximum load width | 1550 | |
| Maximum load height | 1236 | 1243 |
| Load volume m3 (without Multi-Flex seat folded if applicable) | 3.3 | 3.8 |
| Load volume m3 (with Multi-Flex seat folded if applicable) | 3.9 | 4.4 |
| Rear sill load height min to max | 548 - 586 | 571 - 610 |
| DIMENSIONS OF DOORS (mm) | | |
| Minimum width of side sliding door | 641 | |
| Maximum width of side sliding door | 675 | |
| Maximum load height of side sliding door | 1072 | |
| Maximum width of rear opening | 1241 | |
| Load width at floor of rear opening | 1241 | |
| Load width at top of rear opening | 1087 | |
| Maximum load height of rear opening | 1196 | |

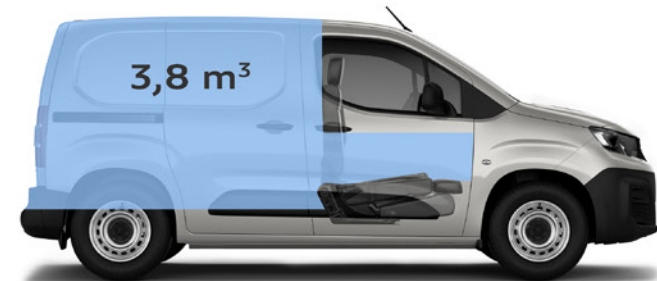
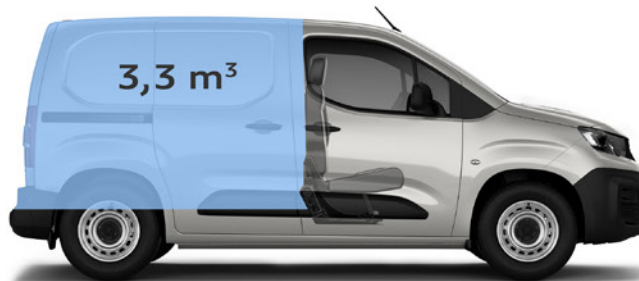


NEW PEUGEOT PARTNER: DIMENSIONS



- (1) Standard version
- (2) Long version
- (3) Without site pack
- (4) With site pack
- (5) Without / with 1 / with 2 door(s) lateral sliding

Standard



Long





E&OE NOVEMBER 2019. FOR FURTHER INFORMATION TALK TO YOUR LOCAL PEUGEOT DEALER OR SEE WWW.PEUGEOT.IE.

The information contained in this specification sheet, is based on the data and images available at the time of publication. Some photography may feature left hand drive models. All images shown are for illustration purposes only. Photographic processes used may alter the depth and tone of the colours shown. As part of a policy on continuous specification improvement, Peugeot reserves the right to modify colours, trims, engine range, options and standard equipment at any time. This specification sheet is not a contractual document or offer of sale.