



NEW PEUGEOT RIFTER

PRICES, EQUIPMENT, OPTIONS & TECHNICAL SPECIFICATIONS

NOVEMBER 2019: E & OE



PEUGEOT

NEW PEUGEOT RIFTER: STANDARD SPECIFICATION ACROSS THE RANGE, FROM ACTIVE TRIM

The Day is Yours!

The new PEUGEOT Rifter reveals a robust and distinctive style. Its modern, high-tech interior, boasting remarkable levels of comfort and adaptability, invites you to enjoy an all-new on-board experience.

No compromise on design. Elegant, robust, agile and powerful, the new PEUGEOT Rifter is a byword for versatility.



5 YEARS
EXTENDED
WARRANTY

Model shown is new PEUGEOT Rifter GT Line

All new PEUGEOT Rifter models, from Active models, come with the following equipment as standard:

Body Style

- Standard (5 seats)
- Long (7 seats)

Safety and Security

- ABS (Anti-lock Braking System) with EBD (Electronic Braking Distribution) and EBA (Emergency Braking Assistance)
- Airbags
 - Adaptive driver and front passenger airbags (includes passenger airbag deactivation function)
 - Driver and front passenger side thorax airbags
 - Front and rear curtain airbags
- Automatic door locking when moving off
- Automatic hazard light activation upon heavy brake application
- Child locking functionality on rear doors
- Deadlocking
- Electronic code immobiliser
- ESP (Electronic Stability Program) with Hill start assist
- Safety Pack: Lane Keeping Assist, Speed limit recognition and recommendation and Active Safety Brake
- Front optimised safety headrests and rear retractable headrests (x3)
- Front three-point retractable seatbelts, with force limiters
- Front and rear disc brakes
- Gear Shift Indicator
- Headlights left on audible warning
- Isofix child seat fittings (x3) in the second row
- Programmable cruise control and speed limiter
- Seatbelt unfastened on the move audible and visual alert for front and rear seats
- Steel spare wheel
- Tyre pressure sensors

Comfort and Convenience

- Electric and heated door mirrors
- Electric power steering with reach- and rake-adjustable steering column
- Front interior light with reading spotlights (x2) and rear interior light with timer
- Front windscreen wiper with multi-speed setting
- Heated rear windscreen & wiper blade
- Multifunction trip computer
- Electric front windows
- PEUGEOT i-Cockpit®: compact steering wheel
- PEUGEOT i-Cockpit®: Head-up instrument panel
- Rear windscreen wiper triggered automatically in reverse gear
- Remote central locking (two remotes)
- Fixing rings (x4), in load area

Interior Features

- 2 heights parcel shelf (Standard versions only)
- Retractable parcel shelf (Long versions only)
- Upper glove compartment
- Full width front overhead storage shelf
- Driver and Passenger dashboard mounted cup holders

In Car Entertainment

- Bluetooth® telephone facility
- USB socket
- 6-Speaker radio, MP3 compatible

Exterior Features

- Contrasting wheel arch trim
- Two sliding side doors
- Rear tailgate with wiper and heated window

Exterior Lighting and Visibility

- Rear LED PEUGEOT signature 'Claw Effect' lights



Model shown is new PEUGEOT Rifter GT in Sunset Copper optional special paint

NEW PEUGEOT RIFTER: STANDARD EQUIPMENT BY VERSION - ACTIVE & ALLURE



ACTIVE: With the perfect balance of character and strength, the Active trim offers even more comfort and convenience.

Standard Active Specification

Comfort and Convenience

- Air conditioning (manual)

Interior Features

- Adamantium interior ambience
- Seating trim: 'Enigmatic' cloth seat trim with overstitch detail
- Seating: Height adjustable driver seat
- Seating: -1/3 - 2/3 folding rear seat (2 row)
- Pop-out opening rear side windows

Exterior Features

- Radiator grille: 3D stamped effect and black surround
- Body-colour door mirrors
- Aluminium roof bars
- Black front bumper with coloured inserts
- 16" Steel Wheel with 'Rakiura' wheel trim
- Door sill protectors

In Car Entertainment

- PEUGEOT i-Cockpit®: 8.0" capacitive touchscreen
- Mirror Screen®: (Apple CarPlay™ and Android Auto)
- USB socket x 1
- Voice recognition (radio, navigation and telephony) linked to Mirror Screen® features)

Exterior Lighting and Visibility

- Halogen headlights
- LED daytime running lights built into the headlamp unit



ALLURE: With added style and specification, the Allure trim offers you the ultimate in luxury.

Standard Allure Specification (Active +)

Comfort and Convenience

- Air-vents in 2nd row with USB socket
- Electric parking brake
- Electric rear windows
- Parking sensors - rear

Interior Features

- Picasso blue interior ambience
- Seating trim: 'Puma' cloth seat trim with blue overstitch detail
- Seating: Height adjustable driver seat with adjustable lumbar support, under-seat storage and elbow rest
- Seating: Foldable passenger seat with under-seat storage and elbow rest
- Seating: Tray tables at the back of the front seats
- Seating: 3 individual rear seats (row 2) with isofix & 'Magic Flat' modularity
- High console between front seats with storage compartment
- Leather Steering wheel
- Row 2 underfloor storage compartments
- 12V Plug Row 2

Exterior Features

- 16" 'Taranaki' Alloy Wheel
- Radiator grille: 3D stamped effect with chrome surround
- Body coloured front bumper
- Look Pack: Body coloured rear bumpers, side strips, mirror shells & door handles
- Fog lights
- Front and rear scuff plates in grey

Exterior Lighting and Visibility

- Visibility pack:
 - Automatic lights
 - Automatic MagicWash® windscreen wipers
 - 'Follow me home headlamps'



Images used for illustration purposes only. Wheel trims vary according to market. Please refer to alloy wheel options.

NEW PEUGEOT RIFTER: STANDARD EQUIPMENT BY VERSION - GT LINE



GT LINE: The best of all worlds, sports styling combined with outstanding levels of efficiency and specification.

Standard GT Line Specification (Allure +)

Safety and Security

- Safety Plus Pack:
 - High Beam Assist (HBA)
 - Extended traffic sign recognition (eTSR)
 - Extended driver attention alert (DAA3)

Comfort and Convenience

- Automatic dual zone climate control
- Air-vents in 2nd row with fan strength command and USB Socket
- PEUGEOT Open and Go (keyless entry and push button start)
- Power folding door mirrors
- Dark tinted rear side and tailgate windows
- Opening tailgate window
- Electric chrome rear view mirror

Interior Features

- Quente Brown interior ambiance

Exterior Features

- 17" 'Aoraki' Alloy Wheel (16" 'Taranaki' Alloy wheel if Advanced Grip Control® option selected)
- Radiator grille: 3D stamped effect and gloss black surround
- Gloss black door mirrors
- 'GT Line' emblems (front wings and tailgate)
- Gloss Black roof bars (Aluminium on Long versions)



Images used for illustration purposes only. Wheel trims vary according to market. Please refer to alloy wheel options.

NEW PEUGEOT RIFTER: PRICE LIST EFFECTIVE 1ST JANUARY 2020

Trim	Lenght	Model Description	RRSP*	WLTP CO2 g/km	VRT Band	Annual Road Tax	Fuel Type	Transmission
Active	L1	1.5 BlueHDi 100BHP	€24,910	157	A4	€200	Diesel	5-speed
		1.5 BlueHDi 130BHP	€26,440	TBC	A4	€200	Diesel	6-speed
		1.5 BlueHDi 130BHP Auto	€28,590	150	A4	€200	Diesel	8-speed
Allure		1.5 BlueHDi 100BHP	€26,940	159	A4	€200	Diesel	5-speed
		1.5 BlueHDi 130BHP	€28,470	152	A4	€200	Diesel	6-speed
		1.5 BlueHDi 130BHP Auto	€30,620	155	A4	€200	Diesel	8-speed
GT Line		1.5 BlueHDi 100BHP	€29,470	TBC	A4	€200	Diesel	5-speed
		1.5 BlueHDi 130BHP	€31,000	155	A4	€200	Diesel	6-speed
		1.5 BlueHDi 130BHP Auto	€33,150	154	A4	€200	Diesel	8-speed
Active	L2	1.5 BlueHDi 100bhp 5-Seats	€26,310	153	A4	€200	Diesel	5-speed
		1.5 BlueHDi 130bhp 5-Seats	€27,940	153	A4	€200	Diesel	6-speed
		1.5 BlueHDi 130bhp Auto 5-Seats	€30,090	152	A4	€200	Diesel	8-speed
Allure		1.5 BlueHDi 100bhp 5-Seats	€28,340	164	A4	€200	Diesel	5-speed
		1.5 BlueHDi 130bhp 5-Seats	€29,970	156	A4	€200	Diesel	8-speed
		1.5 BlueHDi 130bhp Auto 5-Seats	€32,120	156	A4	€200	Diesel	6-speed
GT Line		1.5 BlueHDi 100bhp 5-Seats	€30,870	169	A4	€200	Diesel	5-speed
		1.5 BlueHDi 130bhp 5-Seats	€32,500	159	A4	€200	Diesel	6-speed
		1.5 BlueHDi 130bhp Auto 5-Seats	€34,650	159	A4	€200	Diesel	8-speed

*Dealer delivery related charges, metallic paint and tyre recycling levy not included (Additional 2 seats €950 RRSP. May effect Co2 of vehicle)

NEW PEUGEOT RIFTER: OPTIONS PRICE LIST

	CODE	ACTIVE	ALLURE	GT LINE	RRSP
TECHNOLOGY & ENTERTAINMENT					
8" Navigation capacitive colour touchscreen offering Apple CarPlay™, Android Auto & Mirrorlink® with steering mounted controls, 2 USB ports	WL2J	○	○	○	€585
Wireless charging	ES01	-	-	○	€100
COMFORT & CONVENIENCE					
Electric folding door mirrors	HU02	○	●	-	€155
Rear parking sensors	UB01	○	●	●	€390
Rear and front parking sensors	UB03	○	-	-	€1015
Rear and front parking sensors	UB03	-	○	-	€195
Rear, lateral and front parking sensors + Blind spot detection(BSD)	AO01	-	○	-	€390
Rear parking sensors + Visiopark 180	QK02	-	○	-	€120
Rear and parking sensors + Visiopark 180	J5BX	-	○	●	€315
Rear, lateral and front parking sensors, Visiopark 180 + Blind spot detection(BSD)	J5BZ	-	○	-	€510
Rear and front parking sensors and visio park 180 (Visible on a central 5" screen in location of rear view mirror) + Blind spot detection (BSD)	A001	-	-	○	€195
Rear and front parking sensors and visio park 180 (Visible on a central 5" screen in location of rear view mirror) + Blind spot detection (BSD) + Park assist	N402	-	○	-	€665
Rear and front parking sensors and visio park 180 (Visible on a central 5" screen in location of rear view mirror) + Blind spot detection (BSD) + Park assist	N402	-	-	○	€350
PEUGEOT Open and Go (keyless entry and push button start)	YD01	-	○	●	€255
Dual zone climatronic airconditioning	RE07	○	-	●	€900
Dual zone climatronic airconditioning	RE07	-	○	●	€315
SAFETY & SECURITY					
Safety verticle luggage net	NM01	○	○	○	€195
Automatic electronic parking brake	FH05	○	●	●	€100
Alarm	AB13	○	○	○	€350
Safety plus pack - High beam assist + extended traffic sign recognition + advanced driver attention alert (DAA3)	ZV79	-	○	●	€195
ACC 30 / ACC Stop	ZV80	-	○	-	€665
ACC 30 / ACC Stop	ZV80	-	-	○	€350

○ = Optional. ● = Standard. - = Not available.

NEW PEUGEOT RIFTER: OPTIONS PRICE LIST

	CODE	ACTIVE	ALLURE	GT LINE	RRSP
LIGHTING & VISIBILITY					
Electrochrome rear view mirror (auto dimming)	RL05	-	○	●	€60
Visibility Pack : Automatic Front flat blade wiper with magic wash system and turn on headlamp (includes steering wheel with integrated command)	NB08	○	●	●	€585
DOORS & WINDOWS					
Electric rear windows (Row 2)	LE05	○	●	●	€120
SEATING					
Driver 'Comfort' Seat: 6-way adjustment, manual lumbar support and armrest	IT02	○	●	●	€235
Passenger Seat: 4-way adjustment, armrest, 2nd row floor storage and back seat pockets	1W02	○	●	●	€430
3 Individual rear seat (row2) with "Magic Flat" modularity	AL05	○	●	●	€330
2 Individual, removable and tiltable seats 2 way adjusment (Row 3) (This option will impact Co2 and may move tax bands as a result. Please contact your dealer for pricing)	AN01	○	○	○	€950
INTERIOR FEATURES, STORAGE & LOAD CARRYING					
Child pack - Sunblinds on row 2 and child rear mirror	XN01	○	○	○	€120
230V plug	ES11	○	○	○	€60
WHEELS, TYRES & EXTERIOR FEATURES					
16" Taranaki alloy wheels	DZSB	○	●	-	€580
Advanced Grip control (Includes 16" 'Taranaki' Alloy Wheel)	UF02	○	-	-	TBC
Advanced Grip control (Reduces alloy wheel size to 16" 'Taranaki' Alloy Wheel)	UF02	-	○	-	TBC
Advanced Grip control (Reduces alloy wheel size to 16" 'Taranaki' Alloy Wheel)	UF02	-	-	○	TBC
Dark tinted rear side and tailgate windows	VD10	○	○	●	255
Metallic paint	..M0	○	○	○	585
Onyx Black	..P0	○	○	○	295
Look pack - Body coloured rear bumper, side strips, mirror shells and door handles. Includes foglights	PR01	○	●	●	€430
Panoramic sunroof with central ceiling shelf (Not available on L2 versions)	OU01	○	○	○	€985
TOWING					
Tow bar with standard towing hook, 13 pin connector and trailer stability control	AQ06	○	○	○	€825

○ = Optional. ● = Standard. - = Not available.

NEW PEUGEOT RIFTER: RANGE EQUIPMENT

	ACTIVE	ALLURE	GT LINE		ACTIVE	ALLURE	GT LINE
BODYSTYLE				COMFORT & CONVENIENCE			
Standard (5 seats)	●	●	●	Air conditioning (manual)	●	●	-
Long (5 seats)	●	●	●	Automatic dual zone climate control	○	○	●
SAFETY & SECURITY				Air-vents in 2nd row with USB socket	-	●	-
ABS (Anti-lock Braking System) with EBD (Electronic Braking Distribution) and EBA (Emergency Braking Assistance)	●	●	●	Air-vents in 2nd row with fan strength command and USB Socket - Needs to be ordered in conjunction with Automatic dual zone climate control (RE07)	-	○	●
Airbags: Adaptive driver and front passenger airbags (includes passenger airbag deactivation function)	●	●	●	Dark tinted rear side and tailgate windows	-	-	●
Airbags: Driver and front passenger side airbag	●	●	●	Opening rear tailgate window	-	-	●
Automatic door locking when moving off	●	●	●	Electric and heated door mirrors	●	●	●
Automatic hazard light activation upon heavy brake application	●	●	●	Electric parking brake	○	●	●
Child locking functionality on rear doors	●	●	●	Electric power steering with reach- and rake-adjustable steering column	●	●	●
Deadlocking	●	●	●	Front interior light with reading spotlights (x2) and rear interior light with timer	●	●	●
Electronic code immobiliser	●	●	●	Front windscreen wiper with multi-speed setting	●	●	●
ESP (Electronic Stability Program) with Hill start assist	●	●	●	Tailgate with heated rear windscreen & wiper blade	●	●	●
Front optimised safety headrests and rear retractable headrests (x3), height-adjustable	●	●	●	Multifunction trip computer	●	●	●
Front three-point retractable seatbelts, with force limiters	●	●	●	Electric front windows	●	●	●
Front and rear disc brakes	●	●	●	Pop-out opening rear side windows	●	-	-
Gear Shift Indicator	●	●	●	Electric rear windows	-	●	●
Headlights left on audible warning	●	●	●	Parking sensors - rear	-	●	●
Isofix child seat fittings (x3) in the second row	●	●	●	180° Colour Reversing camera	-	-	●
Programmable cruise control and speed limiter	●	●	●	PEUGEOT i-Cockpit®: compact steering wheel	●	●	●
Safety Pack: Lane Keeping Assist, Speed limit recognition and recommendation and Active Safety Brake	●	●	●	PEUGEOT i-Cockpit®: Head-up instrument panel	●	●	●
Safety Plus Pack : Pack Safety, Traffic sign recognition, Driver attention monitoring system, Low / High beam function	-	○	●	PEUGEOT i-Cockpit®: 8.0" capacitive touchscreen	●	●	●
Seatbelt unfastened on the move audible and visual alert for front and rear seats	●	●	●	PEUGEOT Open and Go (keyless entry and push button start)	-	○	●
Steel spare wheel	●	●	●	Power folding door mirrors	-	○	●
Tyre pressure sensors	●	●	●	Rear windscreen wiper triggered automatically in reverse gear	●	●	●
Exterior temperature indicator with ice warning	●	●	●	Remote central locking (two remotes)	●	●	●
				Fixing rings (x4), in load area	●	●	●

○ = Optional. ● = Standard. - = Not available.

NEW PEUGEOT RIFTER: RANGE EQUIPMENT

	ACTIVE	ALLURE	GT LINE
INTERIOR FEATURES			
Seating trim: 'Enigmatic' cloth seat trim with overstitch detail	●	-	-
Seating trim: 'Puma' cloth seat trim with blue overstitch detail	-	●	-
Seating trim: 'Casual' cloth seat trim with overstitch detail	-	-	●
Adamantium interior ambiance	●	-	-
Picasso blue interior ambiance	-	●	-
Quente Brown interior ambiance	-	-	●
Leather Steering wheel	○	●	●
Seating: Height adjustable driver seat	●	-	-
Seating: Height adjustable driver seat with adjustable lumbar support, under-seat storage and elbow rest	-	●	●
Seating: Foldable passenger seat with under-seat storage and elbow rest	-	●	●
Seating: Tray tables at the back of the front seats	-	●	●
Seating: -1/3 - 2/3 folding rear seat (2 row)	●	-	-
Seating: 3 independent rear seat (2 row) with "Magic Flat" modularity	-	●	●
2 heights parcel shelf (Standard versions only)	●	●	●
Retractable parcel shelf (Long versions only)	●	●	●
Row 2 underfloor storage compartments	○	●	●
Upper glove compartment	●	●	●
Full width front overhead storage shelf	●	●	●
Driver and Passenger dashboard mounted cup holders	●	●	●
High console between front seats with storage compartment	-	●	●
IN CAR ENTERTAINMENT			
Bluetooth® telephone facility	●	●	●
Mirror Screen®: (Apple CarPlay™, Android Auto and MirrorLink®)	●	●	●
USB socket x 1	●	●	●
USB socket rear of centre console	-	●	●
Voice recognition (radio, navigation and telephony features)	●	●	●
6-Speaker radio, MP3 compatible	●	●	●
12 V socket	●	●	●
EXTERIOR FEATURES			
Black front bumper with coloured inserts	○	●	●
Body coloured front bumper	-	●	●
Contrasting wheel arch trim	●	●	●
Door sill protectors	●	●	●
Radiator grille: 3D stamped effect and chrome surround	-	●	-
Radiator grille: 3D stamped effect and black surround	●	-	-
Radiator grille: 3D stamped effect and gloss black surround	-	-	●
Body-colour door mirrors	○	●	-
Gloss black door mirrors	-	-	●
Body-colour exterior door handles	○	●	●
'GT Line' emblems (front wings and tailgate)	-	-	●
Front and rear scuff plates (Black on Active, Grey on Allure and GT Line)	●	●	●
Aluminium roof bars	●	●	-
Gloss Black roof bars (Aluminium on Long 'L' versions)-	-	-	●
16" Steel Wheel with 'Rakiura' wheel trim	●	-	-
16" 'Taranaki' Alloy Wheel	○	●	-
17" 'Aoraki' Alloy Wheel (16" 'Taranaki' Alloy wheel if Advanced Grip Control® option selected)	-	○	●
Two glazed sliding side doors	●	●	●
LIGHTING & VISIBILITY			
Halogen headlights	●	●	●
LED daytime running lights built into the headlamp unit	●	●	●
Rear LED PEUGEOT signature 'Claw Effect' lights	●	●	●
Front fog lights	○	●	●
Visibility pack: automatic lights	○	●	●
Visibility pack: automatic MagicWash® windscreen wipers	○	●	●
Visibility pack: electrochromic rear view mirror (auto dimming)	○	●	●
Visibility pack: 'follow me home headlamps'	○	●	●

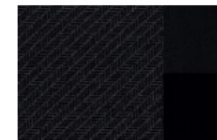
○ = Optional. ● = Standard. - = Not available.

NEW PEUGEOT RIFTER: PAINT & UPHOLSTERY OPTIONS

		ACTIVE	ALLURE	GT LINE
Upholstery		Mistral trimaterial 'Losange' cloth	Mistral trimaterial 'Imila' leather effect and 'Brumeo' cloth	Mistral trimaterial 'Belomka' leather effect and 'Ornis' cloth
Trim Code		'Goa'	'Beton'	'Aikinite'
SOLID PAINT				
Bianca White	WPP0	●	●	●
METALLIC PAINT				
Cumulus Grey	F4M0	○	○	○
Nimbus Grey	VLM0	○	○	○
Pearl Sand	EUM0	○	○	○
Deep Blue	JGM0	○	○	○
Sunset Copper	LGM0	○	○	○
SPECIAL PAINT				
Onyx Black	XYPO	○	○	○



'Enigmatic' cloth seat trim with overstitch detail



'Puma' cloth seat trim with blue overstitch detail



'Casual' cloth seat trim with overstitch detail



Bianca White



Onyx Black



Cumulus Grey



Pearl Sand



Nimbus Grey



Sunset Copper



Deep Blue

NEW PEUGEOT 508: ALLOY WHEEL OPTIONS

	ACTIVE	ALLURE	GT LINE
16" Steel Wheel with 'Rakiura' wheel trim	●	-	-
16" 'Taranaki' Alloy wheel	○	●	○*
17" 'Aoraki' Alloy wheel	-	-	●



16" Steel Wheel with 'Rakiura' wheel trim



16" 'Taranaki' Alloy wheel



17" 'Aoraki' Alloy wheel

*If Grip Control is ordered

NEW PEUGEOT RIFTER: TECHNICAL SPECIFICATION

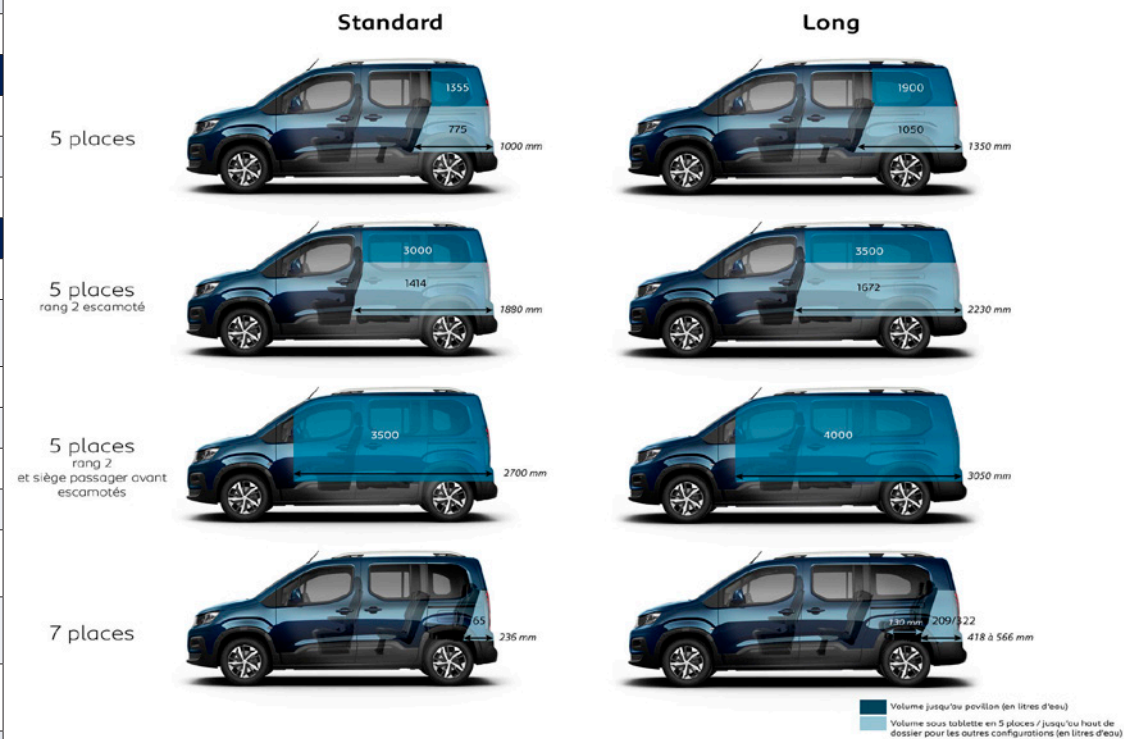
		1.5L BlueHDi 100 5-speed manual S+S		1.5L BlueHDi 130 S&S 6-speed manual		1.5L BlueHDi 130 EAT8 S&S 8-speed Efficient Automatic Transmission		
Body Style		Standard	Long	Standard	Long	Standard	Long	
DRIVETRAIN	Fuel type	Diesel						
	Stop & Start functionality			●		●		
	Cubic capacity	1499		1499		1499		
	Max power hp (Kw)	101 (75) @ 3500		129 (96) @ 3750		1729 (96) @ 3750		
	Max torque lb/ft (Nm)	184 (250) @ 1750		221 (300) @ 1750		221 (300) @ 1750		
	5-speed manual	●						
	6-speed manual			●				
	8-speed automatic					●		
BRAKES	Front & rear discs	Front: ventilated disc brakes with sliding calliper and automatic wear adjustment. Rear: sliding calliper disc brakes						
SUSPENSION & TYRES	Front & rear suspension	FRONT: Independent wheels - Pseudo-Mac Pherson axle, coil springs and integrated and pressurised hydraulic shock absorbers. REAR: Semi-independent wheels - Twist beam axle, hydraulic and pressurised shock absorbers						
	Size - 16" tyres	215 / 65 R16						
	Size - 17" tyres	215 / 60 R17						
	Spare wheel (space saver)	●		●		●		
FUEL	Capacity (litres)			50				
FUEL CONSUMPTION, EMISSIONS & PERFORMANCE (driver only)	16", 17", 18" and 19" wheels	Maximum speed (kph)	170	170	183	184	180	180
		Acceleration 0 - 100kph (sec)	14	14.2	11.6	11.7	12.1	12.2
		WLTP fuel Consumption: Combined MPG (litres/100km) ^^^	6.0 - TBC	5.8 - 6.5	TBC - 5.9	5.8 - 6.1	5.7 - 5.9	5.8 - 6.1
		Regulated Emission Standard	Euro 6.2					
		WLTP carbon Dioxide (CO2) emissions Combined (g/km)	157 - TBC	153 - 169	TBC - 155	153 - 159	150 - 154	152 - 159
		NOx mg/km	63.6	63.6	46.6	46.6	41.7	41.7
VEHICLE WEIGHT INFORMATION (KG)	Gross vehicle weight	2100	2130	2135	2150	2120	2170	
	Mass in service	1499	1576	1505	1602	1505	1525	
	Kerb weight	1424	1501	1430	1527	1430	1450	
	Gross train weight	3400	3380	3635	3600	3420	3395	
	Max braked trailer weight	1300	1250	1500	1450	1300	1225	
	Max tow ball weight	74	50	74	50	52	50	

* The addition of the option of 2 individual seats on row 3 may cause an increase in CO2 that moves the vehicle into the next VRT category which impacts price and road tax. Please contact your local Peugeot dealer for further information



NEW PEUGEOT RIFTER: DIMENSIONS

EXTERNAL DIMENSIONS	
Length (mm) Standard / Long	4,403/4,753
Width (mm)	2,107
Height (mm) Standard / Long	1,878/1,882
Wheelbase (mm) Standard / Long	2,785/2,975
Front / rear overhang (mm) Standard / Long	892/726 / 892/886
Front / rear track width (mm)	1,553 / 1,567
Ground clearance (mm)	216
Sliding side door Max. opening width (mm)	737
Sliding side door opening height	1145
INTERNAL DIMENSIONS	
Number of seats Standard / Long	5
Front 2nd row elbow room (mm)	1,509
Front 2nd row shoulder room (mm)	1,465
BOOT, STORAGE & FUEL TANK	
Maximum loading length Standard / Long (mm)	2,700 / 3,050
Max. loading length behind row 1 (maximum forward position) Standard / Long (mm)	1,880 / 2,230
Max. loading length with passenger seat folded Standard / Long (mm)	2,700 / 3,050
Max. loading length behind row 2 Standard / Long (mm)	1,000 / 1,350
Max. loading length behind row 3 Standard / Long (mm)	236 / 418 to 566
Opening of boot, height / width (mm)	1,195 / 1,126
Boot volume under the parcel shelf Standard / Long with 3rd row removed (litres)	775 / 1,050
Boot volume up to the ceiling Standard / Long with 3rd row removed (litres)	1,355 / 1,900
Boot volume under the parcel shelf with 2nd row folded Standard / Long with 3rd row removed (litres)	1,414 / 1,672
Boot volume up to the ceiling with 2nd row folded Standard / Long with 3rd row removed (litres)	3,000 / 3,500
Boot volume up to the ceiling with 2nd row folded and passenger seat folded Standard / Long with 3rd row removed (litres)	3,500 / 4,000
Max. volume of storage areas in the passenger compartment Standard / Long (litres)	192* / 96
Fuel tank capacity Petrol / Diesel (litres)	61 / 50
AdBlue® tank (litres)	17



*with Zenith Roof

NEW PEUGEOT RIFTER: DIMENSIONS

PEUGEOT RIFTER LONG



A	777
B	799
B1	1676
B2	2632
C	555
D	983
E	877
E3	1106
F	1002
G	420
H	240
I	421
J	1350
J1	598/1200
K	1473
L	1508
M	1509
N	1465
O	1163
P	3500
Q	1198
R	1195
S	436
T	917
U	956
V	620

PEUGEOT RIFTER STANDARD



A	777
B	799
B1	1676
B2	2442
C	555
D	983/1008
E	877
E3	1106
F	1002/942
G	420
H	240
I	421
J	1000
J1	590/1200 ⁽¹⁾
K	1473
L	1508
M	1509
N	1465
O	1149
P	3300
Q	1200
R	1195
S	436
T	856
U	766
V	622

(1) 1007 avec l'option toit zénith



€80E NOVEMBER 2019. FOR FURTHER INFORMATION TALK TO YOUR LOCAL PEUGEOT DEALER OR SEE WWW.PEUGEOT.IE.

The information contained in this specification sheet, is based on the data and images available at the time of publication. Some photography may feature left hand drive models. All images shown are for illustration purposes only. Photographic processes used may alter the depth and tone of the colours shown. As part of a policy on continuous specification improvement, Peugeot reserves the right to modify colours, trims, engine range, options and standard equipment at any time. This specification sheet is not a contractual document or offer of sale.

The specified fuel consumption and emission values are the official figures obtained from tests under standardised EU test conditions in accordance with the Worldwide Harmonized Light Vehicles Test Procedure (WLTP), a more realistic test method for measuring fuel consumption (l/100km) and CO2 emissions and are correct at the time of print. WLTP replaces the previous NEDC test method. The included values reflect the standard vehicle excluding additional equipment such as optional extras and accessories which may have an effect on the fuel consumption (l/100km) and CO2 emissions produced. You can discover more about the WLTP at peugeot.ie/brand-and-technology/wltp