

ŠKODA OCTAVIA
PRODUCT GUIDE



ŠKODA
SIMPLY CLEVER

OCTAVIA LIMO: ENGINE RANGE

Model Code	Model Description	Fuel	Transmission	Gears	CO2 Emissions (g/km)	Fuel Consumption (l/100km)	Annual Road Tax	AMBITION	SOLEIL	STYLE	RS
5E3_B5	1.0TSI 115hp	Petrol	Manual	6-speed	113 – 148	5.0 – 6.5	€190 / €200	€24,340	€24,840	€26,195	---
5E3_N5	1.5TSI 150hp	Petrol	Manual	6-speed	113 – 153	5.0 – 6.8	€190 / €200	€27,735	€28,235	€29,590	---
5E3_ND	1.5TSI 150hp DSG	Petrol	DSG (Auto)	7-speed	127 – 162	5.6 – 7.2	€200	€29,905	€30,405	€31,755	---
5E3_UD	2.0TSI 245hp DSG	Petrol	DSG (Auto)	7-speed	161 – 180	7.1 – 8.0	€280	---	---	---	€42,205
5E3_54	1.6TDI 115hp	Diesel	Manual	5-speed	115 – 150	4.4 – 5.8	€190	€27,125	€27,625	€28,975	---
5E3_85	2.0TDI 150hp	Diesel	Manual	6-speed	123 – 151	4.7 – 5.8	€200	€28,970	€29,470	€30,820	---
5E3_8D	2.0TDI 150hp DSG	Diesel	DSG (Auto)	7-speed	129 – 151	5.0 – 5.8	€190	€31,375	€31,875	€33,225	---
5E3_9Z	2.0TDI 184hp DSG 4x4	Diesel	DSG (Auto)	7-speed	148 – 185	5.7 – 7.1	€280	---	---	---	€42,340

ŠKODA Ireland reserves the right to alter pricing and specification without notice. Delivery & Related Charges Extra - please contact your local ŠKODA dealer for more information. ŠKODA Ireland has made every effort to ensure the accuracy of information but does not accept liability for any errors or omissions.

The specified fuel consumption and emission values are the official figures obtained in accordance with Worldwide Harmonized Light Vehicles Test Procedure (WLTP), a more realistic test method for measuring fuel consumption (l/100km) and CO₂ emissions and are correct at the time of print. The above values reflect the worldwide standard vehicle excluding additional equipment such as optional extras and accessories which may have an effect on the fuel consumption (l/100km) and CO₂ emissions produced. You can discover more about the WLTP at www.skoda-auto.com/services/wltp.



ŠKODA

OCTAVIA COMBI: ENGINE RANGE

Model Code	Model Description	Fuel	Transmission	Gears	CO2 Emissions (g/km)	Fuel Consumption (l/100km)	Annual Road Tax	AMBITION	SOLEIL	STYLE	RS
5E5_B5	1.0TSI 115hp	Petrol	Manual	6-speed	113 – 148	5.0 – 6.5	€200	€25,340	€25,840	€27,195	---
5E5_N5	1.5TSI 150hp	Petrol	Manual	6-speed	113 – 153	5.0 – 6.8	€200	€28,735	€29,235	€30,590	---
5E5_ND	1.5TSI 150hp DSG	Petrol	DSG (Auto)	7-speed	127 – 162	5.6 – 7.2	€200	€30,905	€31,405	€32,755	---
5E5_UD	2.0TSI 245hp DSG	Petrol	DSG (Auto)	7-speed	161 – 180	7.1 – 8.0	€390	---	---	---	€43,205
5E5_54	1.6TDI 115hp	Diesel	Manual	5-speed	114 – 150	4.4 – 5.8	€190 / €200	€28,125	€28,625	€29,975	---
5E5_85	2.0TDI 150hp	Diesel	Manual	6-speed	123 – 151	4.7 – 5.8	€200	€29,970	€30,470	€31,820	---
5E5_8D	2.0TDI 150hp DSG	Diesel	DSG (Auto)	7-speed	129 – 151	5.0 – 5.8	€200	€32,375	€32,875	€34,225	---
5E5_9Z	2.0TDI 184hp DSG 4x4	Diesel	DSG (Auto)	7-speed	148 – 185	5.7 – 7.1	€280	---	---	---	€43,340

ŠKODA Ireland reserves the right to alter pricing and specification without notice. Delivery & Related Charges Extra - please contact your local ŠKODA dealer for more information. ŠKODA Ireland has made every effort to ensure the accuracy of information but does not accept liability for any errors or omissions.

The specified fuel consumption and emission values are the official figures obtained in accordance with Worldwide Harmonized Light Vehicles Test Procedure (WLTP), a more realistic test method for measuring fuel consumption (l/100km) and CO₂ emissions and are correct at the time of print. The above values reflect the worldwide standard vehicle excluding additional equipment such as optional extras and accessories which may have an effect on the fuel consumption (l/100km) and CO₂ emissions produced. You can discover more about the WLTP at www.skoda-auto.com/services/wltp.



ŠKODA

AMBITION: KEY EQUIPMENT

SAFETY

Driver & front passenger airbags incl. passenger airbag deactivation

Front side & curtain airbags

Driver knee airbag

Remote control central locking

Seatbelt warning system

Electronic stability control (ESC) & Anti-slip regulation (ASR)

iSOFIX child seat anchor points

Tyre pressure monitoring system



FUNCTIONAL

Air conditioning (Manual)

Rear parking sensors

Rear view camera

Cruise Control

Automatic rain & light sensors

Power folding exterior mirrors

Trailer hitch preparation

Front & rear electric windows

Maxidot multi-function display

'BOLERO' infotainment system incl. 8" touchscreen display

Voice control, USB port & 8 speakers

Bluetooth® phone / audio streaming

Smartlink (Apple Carplay / Android Auto)

EXTERIOR

16" 'Alcatras' alloy wheels

16" 'Ilias' alloy wheels for 1.6TDI Limo

Spare wheel, tool kit and jack

Body coloured exterior mirrors

Black roof rails (Combi)

Front fog lights

LED daytime running lights

LED tail lights

INTERIOR

Black 'AMBITION' fabric upholstery

Front seats incl. height adjust (Manual)

Front seats incl. lumbar support (Manual)

Front armrest incl. storage compartment

Split folding rear seat

Leather multi-function steering wheel

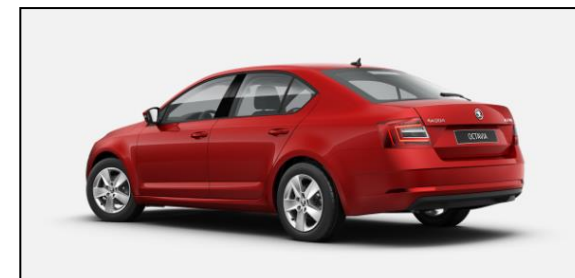
Front overhead storage & reading lights

Front & rear ashtray

Luggage compartment lighting incl. 12V socket

Rear parcel shelf (sliding for Combi)

Front & rear door storage compartments



SOLEIL: KEY EQUIPMENT

The special edition SOLEIL marries style with technology. Packed with host of features including LED headlights and heated front seats,, the heightened equipment levels really set it apart. Additional/replacement equipment on the SOLEIL trim includes (AMBITION +):

LED headlights incl. AFS technology

Fabric/Leather upholstery

Heated front seats

'SUNSET' dark tinted privacy glass

Front headlight washers

Rear centre armrest

Auto-dimming rear-view mirror

eCall - Emergency call system

Care Connect (1 year subscription)

Exclusive SOLEIL badge



STYLE: KEY EQUIPMENT

Effortlessly combining style with practicality, the STYLE trim includes a leather sports steering wheel, chrome exterior features, 17" alloy wheels and a 9.2" navigation system. Additional/replacement equipment on the STYLE includes (AMBITION +):

17" "Trius" alloy wheels

Climatronic dual-zone air conditioning

Chrome pack:

- Window surround
- Front grille insert
- Roof rails (Combi)

Maxidot colour multi-function display

Auto-dimming rear view mirror

'COLUMBUS' navigation system:

- 9.2" touchscreen display
- 3D maps w/ integrated storage
- Wi-Fi connectivity
- CD/DVD drive
- Gesture control
- Digital audio broadcast (DAB radio)
- Care connect & Infotainment online (1 year subscription)

Rear centre armrest

Leather sports steering wheel

Black 'STYLE' fabric upholstery



RS: KEY EQUIPMENT

The OCTAVIA RS's sporty chassis and exterior design all point towards power. This is a car that uniquely combines a dynamic driving experience with smart practicality. Equipped with a host of features, including (STYLE+):

18" 'Gemini' alloy wheels

LED headlights incl. AFS technology

RS exterior styling pack:

- Sports bumpers
- RS chrome exhaust tailpipe
- Red brake calipers
- Black exterior mirror covers
- Black rear spoiler (Limo)
- Black roof rails (Combi)

RS interior styling pack:

- RS front sports seats
- RS Fabric/Alcantara upholstery incl. Black headliner
- RS leather sports steering wheel incl. DSG shifting
- Aluminium door sills & sports pedals
- LED ambient lighting

2.0TSI 245hp also includes:

- 19" 'X-treme Anthracite' alloy wheels
- Drive mode select
- Electronic differential lock (EDL)
- Dark tinted privacy glass
- Heated front seats



OCTAVIA: WHEELS



16" 'Velorum' alloy wheels
(Code PJU)



16" 'Ilias' alloy wheels
(Code PJI)



16" 'Alcatras' alloy wheels
(Code PJO)



17" 'Trius' alloy wheels
(Code PJ3)



17" 'Trius Black' alloy wheels
(Code PCS)



18" 'Gemini' alloy wheels
(Code F18)



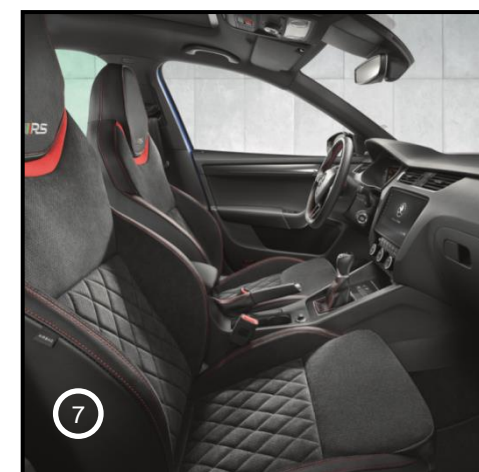
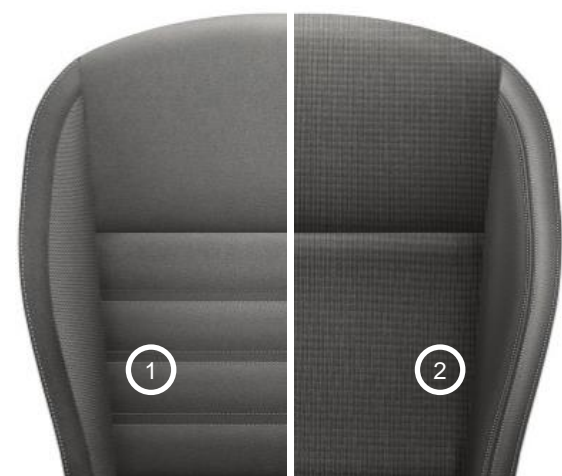
19" 'X-treme Anthracite' alloy wheels
(Code PJX)

CODE	DESCRIPTION	AMBITION	SOLEIL	STYLE	RS
PJI	16" 'Ilias' alloy wheels (standard for 1.6TDI Limo)	€0 / STANDARD	€0 / STANDARD	---	---
PJO	16" 'Alcatras' alloy wheels (not available for 1.6TDI Limo)	STANDARD	STANDARD	---	---
PJU	16" 'Velorum' alloy wheels (not available for 1.6TDI Limo)	€0	€0	---	---
PJ3	17" 'Trius' alloy wheels (optional for Diesel only)	€370	€370	STANDARD	---
PCS	17" 'Trius Black' alloy wheels	---	---	€130	---
F18	18" 'Gemini' alloy wheels	---	---	---	STANDARD
PJX	19" 'X-treme Anthracite' alloy wheels (standard for 2.0TSI)	---	---	---	€514
PJC	Space saver spare wheel	€0	€0	STANDARD	STANDARD

Option prices quoted are for reference only and are subject to change depending on VRT band applicable – please contact your local ŠKODA dealer for more information.

OCTAVIA: INTERIOR

IMAGE	TRIM	INTERIOR	INTERIOR CODE	LINKED OPTIONS	SEAT - CENTRAL	SEAT - OUTER	DECORATIVE TRIM	DOOR LINING	ROOF LINER
1	AMBITION	STANDARD	HA	---	Black Fabric	Black Fabric	Silver Brushed	Black	Grey
	AMBITION	OPTION	EX	PH8/PH9	Black Fabric	Black Fabric	Silver Brushed	Black	Black
2	SOLEIL	STANDARD	HA	---	Black Fabric	Black Leather	Silver Brushed	Black	Grey
	SOLEIL	OPTION	EX	PH8/PH9	Black Fabric	Black Leather	Silver Brushed	Black	Black
	STYLE	OPTION	HA	PLE	Black Fabric	Black Leather	Dark Brushed	Black	Grey
3	STYLE	STANDARD	HA	---	Black Fabric	Black Fabric	Dark Brushed	Black	Grey
4	STYLE	OPTION	KA	---	Beige Fabric	Beige Fabric	Dark Brushed	Beige	Black
5	STYLE	OPTION	HA	PLB	Black Leather	Black Leather	Dark Brushed	Black	Grey
6	STYLE	OPTION	HG	WE (B/C/E) + YC (B/H/J)	Black Fabric	Black Fabric	Dark Brushed	Black	Black
7	RS	STANDARD	LH	---	Black Fabric	Black Alcantara	Carbon / Black	Black	Black
	RS	OPTION	LH	PLG	Black Alcantara	Black Leather	Carbon / Black	Black	Black



OCTAVIA: OPTIONAL EXTRAS

PACKAGES		AMBITION	SOLEIL	STYLE	RS
WEA	LED pack: <ul style="list-style-type: none"> LED headlights incl. AFS technology Front fog lights incl. cornering function Front headlight washers Driver alert 	---	---	€1,053	---
WEB/C/E	Sportline pack: <ul style="list-style-type: none"> 17" 'Trius Black' alloy wheels LED headlights incl. AFS technology Front fog lights incl. cornering function Front headlight washers Driver alert 'SUNSET' dark tinted privacy glass Front sports seats incl. Red stitching Black roofliner, door mirrors, front grille, window surround Black/Silver decorative exterior trim (YCB/YCH/YCJ) 	----	----	€1,543	----
WEH	X-treme pack (standard for 2.0TSI): <ul style="list-style-type: none"> 19" 'X-treme Anthracite' alloy wheels 'SUNSET' dark tinted privacy glass Heated front seats 	---	---	---	€810

SAFETY / DRIVER ASSISTANCE		AMBITION	SOLEIL	STYLE	RS
8T6	Speed limiter (requires PL6/PL7 + PW0)	€ 54	€ 54	€ 54	€ 56
UG1	Hill hold control (standard for DSG engines)	€ 97	€ 97	€ 97	STANDARD
7X2	Front & rear parking sensors	€ 383	€ 383	€ 383	€ 396
4L6	Auto-dimming rear view mirror	€ 64	STANDARD	STANDARD	STANDARD
8G1	High beam control (requires 4L6/PWH)	€ 237	€ 237	€ 237	€ 245
3G1	iSOFIX front passenger seat anchor points	€ 40	€ 40	€ 40	€ 42
PE4	Rear curtain/side airbags	€ 373	€ 373	€ 373	€ 386
PWH	Lane assist	€ 600	€ 600	€ 535	€ 553
PWI	Travel assist: Traffic sign recognition, Lane assist & High beam control	---	---	€ 854	€ 883
PSI	Forward collision warning, emergency brake & pedestrian protection	€ 365	€ 365	€ 365	€ 377
PSC	Adaptive cruise control incl. forward collision warning, emergency brake & pedestrian protection (requires PL6/PL7)	€ 760	€ 760	€ 760	€ 785
PDB	Anti-theft alarm system incl. interior monitoring & towing protection	€ 285	€ 285	€ 285	€ 294
PDE	'KESSY FULL' – Keyless Entry/Go system (without SAFE function)	€ 479	€ 479	€ 479	€ 495

Option prices quoted are for reference only and are subject to change depending on VRT band applicable – please contact your local ŠKODA dealer for more information.

OCTAVIA: OPTIONAL EXTRAS

FUNCTIONAL		AMBITION	SOLEIL	STYLE	RS
PHB	Climatronic dual-zone air conditioning	€ 577	€ 577	STANDARD	STANDARD
UK3	Mechanical rear seat release	€ 108	€ 108	€ 108	STANDARD
3NU	Rear centre armrest	€ 201	STANDARD	STANDARD	STANDARD
4E7	Electric tailgate (Combi only)	€ 452	€ 452	€ 452	€ 466
PW0	Heated front seats	€ 237	STANDARD	€ 237	€ 244
PH5	Heated windscreen (requires PW0/WEH)	€ 243	€ 243	€ 243	€ 251
PW4	Auto-dimming exterior mirrors incl. boarding spots (requires 4L6/PWH)	€ 171	€ 171	---	STANDARD
PW5	Auto-dimming exterior mirrors incl. boarding spots & memory function (requires PWD)	---	---	€ 171	€ 0
PL1	Rear window blind – roll-up function (Limo only)	€ 179	€ 179	€ 179	€ 184
3CX	Net partition (Combi only)	€ 195	€ 195	€ 195	€ 201
9T1	Heated washer nozzles	€ 34	€ 34	€ 34	€ 34
PWD	Electric driver seat incl. electric lumbar & memory function (requires PW5)	---	---	€ 1,131	€ 1,168
PFC	Drive mode select incl. 3 x keys (N/a 1.0TSI)	€ 168	€ 168	€ 168	---
PFD	Drive mode select incl. 3 x keys & sound actuator (standard for 2.0TSI)	---	---	---	€ 286
PFH	Dynamic chassis control (DCC) incl. driving mode select, 3 x keys & sound actuator	---	---	---	€ 1,373
INTERIOR STYLING		AMBITION	SOLEIL	STYLE	RS
6T2	Front & rear footwell lights	€ 16	€ 16	€ 16	STANDARD
PWZ	LED interior ambient lighting	---	---	€ 171	STANDARD
PLU	Leather sports steering wheel	€ 142	€ 142	STANDARD	---
PLX	Leather sports steering wheel incl. DSG shifting	€ 255	€ 255	€ 112	---
PL6	Leather heated steering wheel (requires PW0 + 8T6/PSC)	€ 159	€ 159	€ 16	---
PL7	Leather heated steering wheel incl. DSG shifting (requires PW0/WEH + 8T6/PSC)	---	---	---	€164
PLE	Fabric/Leather upholstery	---	STANDARD	€ 918	---
PLB	Leather upholstery	---	---	€ 1,893	---
PLG	Alcantara/Leather upholstery	---	---	---	€ 740

Option prices quoted are for reference only and are subject to change depending on VRT band applicable – please contact your local ŠKODA dealer for more information.

OCTAVIA: OPTIONAL EXTRAS

EXTERIOR STYLING		AMBITION	SOLEIL	STYLE	RS
PH7	'SUNSET' dark tinted privacy glass	€ 181	STANDARD	€ 181	€ 186
PW2	Front fog lights incl. cornering function	€ 138	€ 138	€ 138	---
4ZC	Chrome window surround (Combi)	€ 321	€ 321	STANDARD	---
4ZG	Chrome window surround (Limo - N/a 1.5TSI)	€ 151	€ 151	STANDARD	---
PG1	Chrome roof rails (Combi)	€ 179	€ 179	STANDARD	€ 184
PG2	Gloss Black roof rails (Combi)	---	---	---	€ 92
PH8	Panoramic sunroof without overhead storage (Combi)	€ 1,392	€ 1,392	€ 1,407	€ 1,438
PH9	Panoramic sunroof without overhead storage (Limo)	€ 1,265	€ 1,265	€ 1,265	€ 1,307

AUDIO / NAVIGATION		AMBITION	SOLEIL	STYLE	RS
QV3	DAB radio	€ 130	€ 130	STANDARD	STANDARD
9S6	Maxidot colour multi-function display	€ 108	€ 108	STANDARD	STANDARD
9S0	Virtual cockpit	€ 624	€ 624	€ 516	€ 533
RA3	'CANTON' sound system (requires PDE)	€ 588	€ 588	€ 574	€ 607
PNC	'AMUNDSEN' navigation system (requires PT5 + YOY + NZ4)	€ 307	€ 307	---	---
PNE	'COLUMBUS' navigation system (requires 9S6/9S0 + QV3 + PT7 + YOY + NZ4)	€ 1,612	€ 1,612	STANDARD	STANDARD
PT5	Wireless charging pad (requires PNC)	€ 413	€ 413	---	---
PT7	Wireless charging pad incl. signal booster (requires PNE)	€ 686	€ 686	€ 349	€ 361
NZ4	eCall (requires PNC/PNE)	€ 0	€ 0	STANDARD	STANDARD
YOY	Care connect & Infotainment online (1 year subscription) (requires PNC/PNE)	€ 0	€ 0	STANDARD	STANDARD

Option prices quoted are for reference only and are subject to change depending on VRT band applicable – please contact your local ŠKODA dealer for more information.

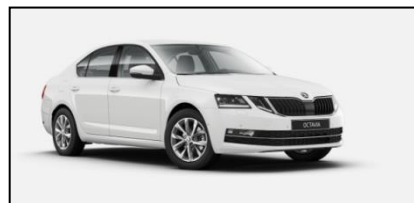
OCTAVIA: EXTERIOR COLOURS



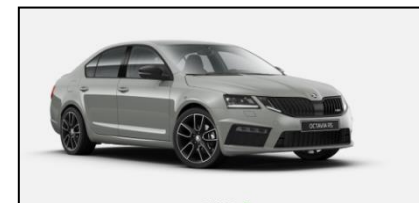
Energy Blue (K4K4 – Solid)



Corrida Red (8T8T – Solid)



Candy White (9P9P – Solid)



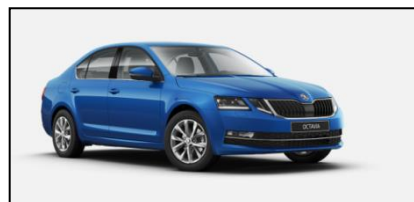
Steel Grey^ (M3M3 – Solid)



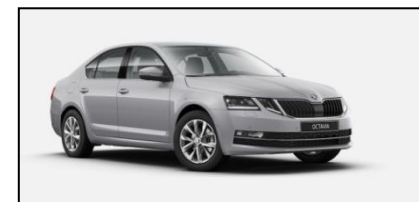
Black Magic Pearlescent^ (1Z1Z – Metallic)



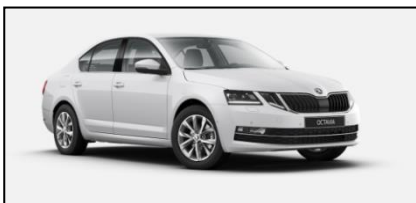
Quartz Grey (F6F6 – Metallic)



Race Blue^ (8X8X – Metallic)



Brilliant Silver (8E8E – Metallic)



Moon White^ (2Y2Y – Metallic)

DESCRIPTION	AMBITION	SOLEIL	STYLE	RS
Solid: Energy Blue	€0	€0	€0	---
Solid: Corrida Red / Candy White / Steel Grey	€243	€243	€243	€0
Metallic:	€656	€656	€656	€248

Steel Grey only available on RS
^ = only colours available for RS

Option prices quoted are for reference only and are subject to change depending on VRT band applicable – please contact your local ŠKODA dealer for more information. All the colour images on this page are matched as accurately as possible to the actual paint colours used. However, due to print processes, ŠKODA Ireland cannot guarantee that colours shown are 100% accurate. Please contact your local ŠKODA dealer for more information.

OCTAVIA: TECHNICAL DATA

	1.0TSI 115hp	1.5TSI 150hp	1.5TSI 150hp DSG	2.0TSI 245hp DSG	1.6TDI 115hp	2.0TDI 150hp	2.0TDI 150hp DSG	2.0TDI 184hp DSG
Fuel Type	Petrol	Petrol	Petrol	Petrol	Diesel	Diesel	Diesel	Diesel
Cylinders / Displacement (cc)	3 / 999	4 / 1498	4 / 1498	4 / 1984	4 / 1598	4 / 1968	4 / 1968	4 / 1968
Max. Power: kW @ rpm	85 / 5000 – 5500	110 / 5000 – 6000	110 / 5000 – 6000	180 / 5000 – 6200	85 / 3250 – 4000	110 / 3500 – 4000	110 / 3500 – 4000	135 / 3500 – 4000
Max. Torque: Nm @ rpm	200 / 2000 – 3500	250 / 1500 – 3500	250 / 1500 – 3500	370 / 1600 – 4300	250 / 1750 – 3200	340 / 1750 – 3000	340 / 1750 – 3000	380 / 1750 – 3250
Transmission	Manual	Manual	DSG (Auto)	DSG (Auto)	Manual	Manual	DSG (Auto)	DSG (Auto)
Gears	6-speed	6-speed	7-speed	7-speed	5-speed	6-speed	7-speed	7-speed
Traction System	Front wheel drive	Front wheel drive	Front wheel drive	Front wheel drive	Front wheel drive	Front wheel drive	Front wheel drive	All wheel drive
Length (mm)	4670	4670	4670	4689	4670	4670	4670	4689
Width (mm)	1814	1814	1814	1814	1814	1814	1814	1814
Height (mm)	1461	1461	1461	1448	1461	1461	1461	1448
Wheelbase (mm)	2686	2686	2686	2680	2686	2686	2686	2680
Max. Luggage Capacity (l)	590	590	590	590	590	590	590	590
Top Speed (km/h)	208	223	223	250	203	223	221	228
0 – 100 km/h (seconds)	9.9	8.7	8.7	6.7	10.3	8.5	8.9	7.7
Turning Circle (m)	10.4	10.4	10.4	10.5	10.4	10.4	10.4	10.4
WLTP Fuel Consumption (Min. – Max.)								
Low (l/100km)	6.6 – 7.7	7.3 – 8.4	8.2 – 9.3	10.6 – 11.2	5.2 – 6.4	6.3 – 6.9	6.8 – 7.3	7.7 – 9.0
Medium (l/100km)	4.9 – 6.3	5.0 – 6.5	5.6 – 7.0	7.1 – 7.8	4.2 – 5.5	4.8 – 5.7	5.1 – 5.7	5.9 – 7.1
High (l/100km)	4.3 – 5.7	4.2 – 5.9	4.8 – 6.2	6.0 – 6.8	3.9 – 5.1	4.1 – 5.1	4.3 – 5.1	5.0 – 6.3
Extra High (l/100km)	5.2 – 7.0	4.9 – 7.1	5.4 – 7.3	6.8 – 7.9	4.6 – 6.3	4.6 – 6.1	4.8 – 5.9	5.4 – 7.1
Combined (l/100km)	5.0 – 6.5	5.0 – 6.8	5.6 – 7.2	7.1 – 8.0	4.4 – 5.8	4.7 – 5.8	5.0 – 5.8	5.7 – 7.1
WLTP Emissions Combined (CO2 g/km)	113 – 148	113 – 153	127 – 162	161 – 180	114 – 150	123 – 151	129 – 151	148 – 185
Gross Vehicle Weight (kg)	1796	1830	1845	1970	1898	1923	1945	2053
Max. Towing Capacity - Braked (kg)	1300	1500	1500	1600	1500	1600	1600	2000
Fuel Tank Capacity (l)	50	50	50	50	50	50	50	55



ŠKODA

OCTAVIA COMBI: TECHNICAL DATA

	1.0TSI 115hp	1.5TSI 150hp	1.5TSI 150hp DSG	2.0TSI 245hp DSG	1.6TDI 115hp	2.0TDI 150hp	2.0TDI 150hp DSG	2.0TDI 184hp DSG
Fuel Type	Petrol	Petrol	Petrol	Petrol	Diesel	Diesel	Diesel	Diesel
Cylinders / Displacement (cc)	3 / 999	4 / 1498	4 / 1498	4 / 1984	4 / 1598	4 / 1968	4 / 1968	4 / 1968
Max. Power: kW @ rpm	85 / 5000 – 5500	110 / 5000 – 6000	110 / 5000 – 6000	180 / 5000 – 6200	85 / 3250 – 4000	110 / 3500 – 4000	110 / 3500 – 4000	135 / 3500 – 4000
Max. Torque: Nm @ rpm	200 / 2000 – 3500	250 / 1500 – 3500	250 / 1500 – 3500	370 / 1600 – 4300	250 / 1750 – 3200	340 / 1750 – 3000	340 / 1750 – 3000	380 / 1750 – 3250
Transmission	Manual	Manual	DSG (Auto)	DSG (Auto)	Manual	Manual	DSG (Auto)	DSG (Auto)
Gears	6-speed	6-speed	7-speed	7-speed	5-speed	6-speed	7-speed	7-speed
Traction System	Front wheel drive	Front wheel drive	Front wheel drive	Front wheel drive	Front wheel drive	Front wheel drive	Front wheel drive	All wheel drive
Length (mm)	4667	4667	4667	4689	4667	4667	4667	4689
Width (mm)	1814	1814	1814	1814	1814	1814	1814	1814
Height (mm)	1465	1465	1465	1452	1465	1465	1465	1452
Wheelbase (mm)	2686	2686	2686	2680	2686	2686	2686	2680
Max. Luggage Capacity (l)	610	610	610	610	610	610	610	610
Top Speed (km/h)	199	215	214	244	199	216	213	218
0 – 100 km/h (seconds)	10.1	8.8	8.8	6.8	10.4	8.6	9.0	7.8
Turning Circle (m)	10.4	10.4	10.4	10.5	10.4	10.4	10.4	10.4
WLTP Fuel Consumption (Min. – Max.)								
Low (l/100km)	6.5 – 7.7	7.3 – 8.4	8.2 – 9.3	10.6 – 11.2	5.2 – 6.4	6.3 – 6.9	6.8 – 7.3	7.7 – 9.0
Medium (l/100km)	4.9 – 6.3	5.0 – 6.6	5.6 – 7.0	7.1 – 7.8	4.2 – 5.5	4.8 – 5.7	5.1 – 5.7	5.9 – 7.1
High (l/100km)	4.3 – 5.7	4.2 – 5.9	4.8 – 6.2	6.0 – 6.8	3.9 – 5.1	4.1 – 5.1	4.3 – 5.1	5.0 – 6.3
Extra High (l/100km)	5.2 – 7.0	4.9 – 7.1	5.4 – 7.3	6.8 – 7.9	4.6 – 6.3	4.6 – 6.1	4.8 – 5.9	5.4 – 7.1
Combined (l/100km)	5.0 – 6.5	5.0 – 6.8	5.6 – 7.2	7.1 – 8.0	4.4 – 5.8	4.7 – 5.8	5.0 – 5.8	5.7 – 7.1
WLTP Emissions Combined (CO2 g/km)	113 – 148	113 – 153	127 – 162	161 – 180	114 – 150	123 – 151	129 – 151	148 – 185
Gross Vehicle Weight (kg)	1838	1872	1887	2014	1927	1950	1971	2097
Max. Towing Capacity - Braked (kg)	1300	1500	1500	1600	1500	1600	1600	2000
Fuel Tank Capacity (l)	50	50	50	50	50	50	50	55



ŠKODA